




COLORADO
CHARTER SCHOOL INSTITUTE

2024-2025
**ANNUAL
REPORT**

INNOVATION IN AUTHORIZING



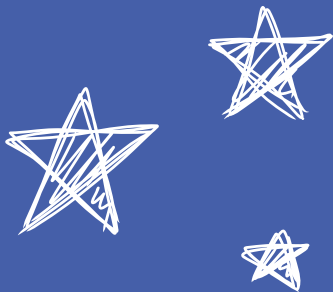
CONTENTS



Welcome Letter	4
Who We Are	6
Our Why	7
Who We Serve	9
Authorization Updates	10
Portfolio Outcomes	11
Organizational Highlights	12
Innovation in Authorizing	14
Innovation at CSI Schools	16
Legislative Highlights	18
Our Team	20
Looking Ahead	22

OUR MISSION

Our mission is to foster high-quality charter public school choices for all students.

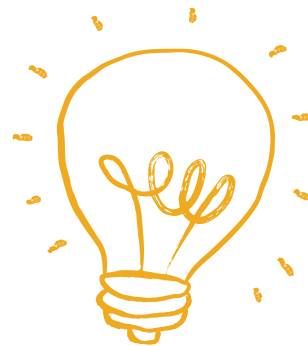


WELCOME LETTER

Dear Friends,

We are proud to share our 2024-25 Annual Report with you. This year's theme—Innovation in Authorizing—captures the spirit of creativity, partnership, and progress that continues to define our work at the Colorado Charter School Institute (CSI).

As a charter public school authorizer, CSI is uniquely positioned to create the conditions in which innovative school models can thrive. Supporting innovation is not just an opportunity, but a responsibility—because we believe that through innovation we can expand access to the high-quality public school options Colorado students deserve. This year's report highlights the bold ideas and new approaches that are reshaping authorizing and education.



Creating Space for Innovation

In response to our Board's call to foster a more innovative education landscape, CSI launched several new initiatives aimed at breaking down barriers to innovation. From application processes that intentionally seek diverse models to pilot pathways for non-traditional accountability measures, we are shifting the narrative on what is possible within public education. Our [Innovative Schools Guidebook](#) has become a valuable resource for schools, applicant teams, and the authorizing community looking to bring visionary educational ideas to life. Our subsequent publication, [Stories of Impact and Innovation](#), highlights the many ways our schools have leaned into innovation within their own communities.

Partnering to Support Unique School Visions

Whether supporting a school serving students on the Ute Mountain Ute reservation or a school focused on competency-based education for parenting teens, we have leaned into our role as a thought partner. We've expanded our Year Zero programming for schools preparing for their first year of operation, launched new governance and facility supports, and offered interest-free lines of credit to help schools overcome early operational hurdles. Our authorizing work is rooted in collaboration with school teams, and we are proud of the tailored supports we've provided to help schools open and succeed.



Measuring What Matters

True innovation requires rethinking how we define and measure success. CSI's pilot process for evaluating innovative measures is a leading example of how accountability can evolve without compromising rigor. From social-emotional growth to workforce readiness, we are helping schools develop and track the outcomes that are most relevant to their students and communities. At renewal, during our annual reviews, and throughout each school's journey, we are leveraging both traditional academic data and non-traditional measures to tell a richer story of impact.

A Culture of Continuous Improvement

Innovation in authorizing also means continuously reflecting upon and improving our own practices. We have worked across departments to streamline tasks through tools like Epicenter, launched leadership development programming, and gathered feedback through surveys and school visits to ensure our strategies are aligned with the needs of the field. Our board and staff remain committed to being a model authorizer—one that listens, learns, and leads.

As we look to the future, we know that the challenges facing public education demand bold solutions. CSI is committed to empowering school communities to take those bold steps—grounded in data, driven by mission, and supported by an authorizer that champions innovation.

Thank you for walking this path with us.

With gratitude,



A handwritten signature in black ink, reading "Brenda Dickhoner".

Dr. Brenda Dickhoner

CSI Board Chair



A handwritten signature in black ink, reading "Terry Croy Lewis".

Dr. Terry Croy Lewis

CSI Executive Director

WHO WE ARE

Our Mission is to foster high-quality charter public school choices for all students.

Our Vision is to be recognized as the nation's most effective charter school authorizer by building a portfolio of high-performing charter public schools that use innovative educational designs to serve all students.

WHAT IS AN AUTHORIZER?

An authorizer is an entity approved by the state legislature to:

- 1) open new charter schools,
- 2) monitor existing charter schools, and
- 3) close failing schools.

Charter public schools are accountable to their authorizer for meeting local, state, and federal requirements.

Fundamental principles of authorizing include:

- **Accountability** for schools in meeting high expectations
- **Access** to high-quality school options for all students
- **Autonomy** for schools to best meet the needs of their students

CSI'S ROLES

CSI serves several roles, which require it to fulfill additional monitoring requirements above and beyond what might be required of an entity that is solely an authorizer.



Authorizer



Local Education Agency



Administrative Unit



School Food Authority



Fiscal Agent

OUR WHY

At CSI, we believe every child deserves access to high-quality school options, and families should choose the schools that best fit their children's needs. This is our why. We're committed to sharing the unique stories of CSI students, parents, school leaders, and staff.

Johanna first heard about New Legacy from a clinic social worker who was helping her with her son, Imer. Johanna started at New Legacy with Imer, but encountered several obstacles that led her to drop out. A year later, after she and her current partner had their second son, Alexander, she re-enrolled. She says that this decision was due to a mindset shift and to New Legacy's staff:

"As a person, parent, and student, New Legacy gave me strength and courage to fight for my dreams in life and have the strength to fight for my kids. I even became Salutatorian as the staff helped me see my own potential as a person and helped me see the strong, hardworking person I am. [My teachers] gave me support when I became homeless and was living in my car for six months; the staff came to support me in any way, and my kids and I will never forget how New Legacy helped me enter college. I'm enrolling in college with the support of my teachers and will become an immigration lawyer."

Johanna

Student, New Legacy Charter School



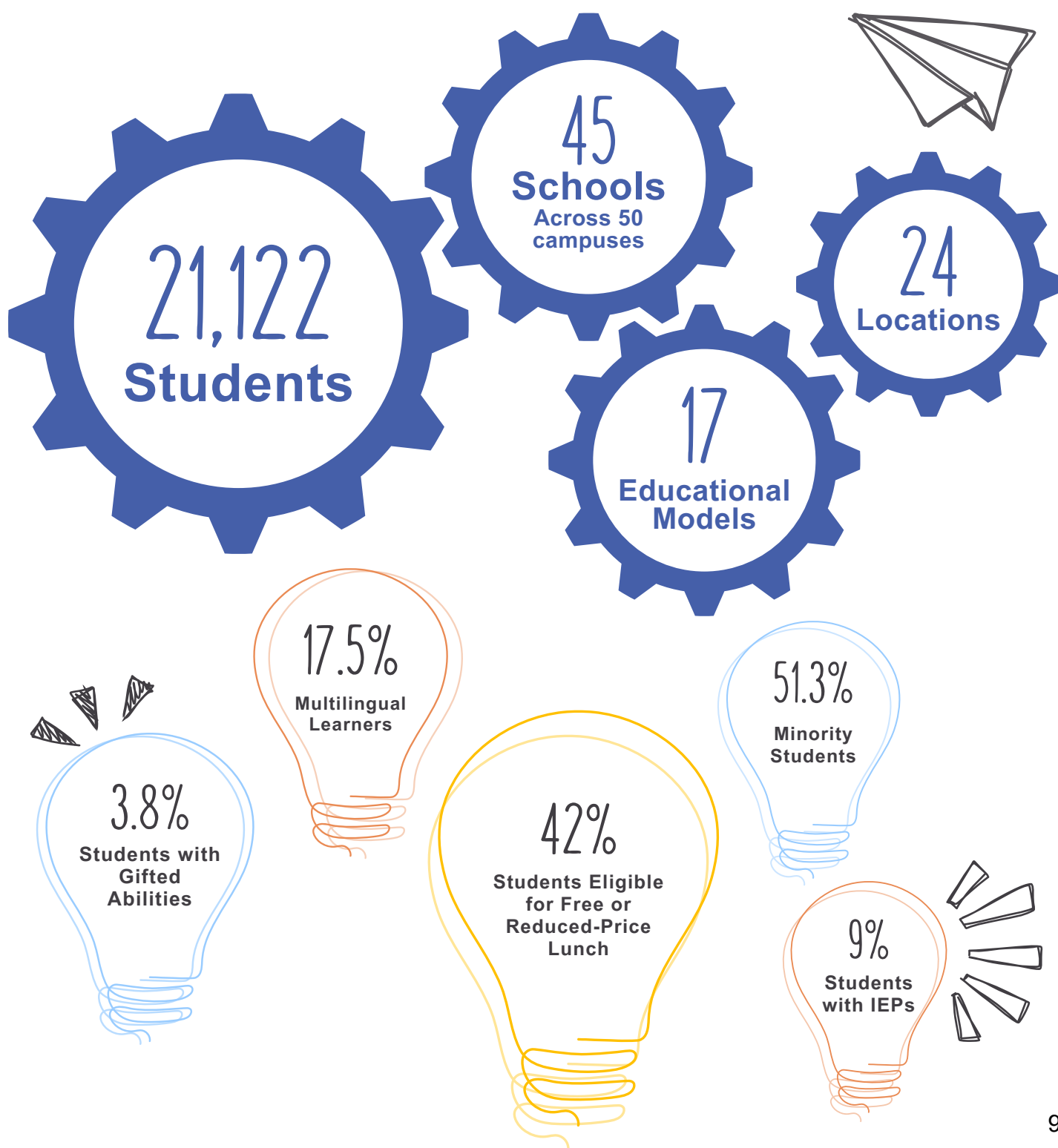
CSI PORTFOLIO

School	City	Model	Grades
Academy of Advanced Learning**	Aurora	Personalized Learning	K-8
Academy of Arts & Knowledge	Fort Collins	Arts Integration	K-5
Animas High School	Durango	Project-Based Learning	9-12
Ascent Classical Academy of Douglas County	Lone Tree	Classical	K-12
Ascent Classical Academy of Grand Junction	Grand Junction	Classical	K-8
Ascent Classical Academy of Northern Colorado	Fort Collins	Classical	K-12
Ascent Classical Academy of Northern Denver	Brighton	Classical	K-8
AXIS International Academy	Fort Collins	Language Immersion	PK-6
Caprock Academy	Grand Junction	Classical	K-12
Colorado Early Colleges Aurora	Aurora	Early College	9-12
Colorado Early Colleges Colorado Springs	Colorado Springs	Early College	6-12
Colorado Early Colleges Douglas County	Parker	Early College	9-12
Colorado Early Colleges Fort Collins	Fort Collins	Early College	9-12
Colorado Early Colleges Online Campus	Online	Early College	6-12
Colorado Early Colleges Windsor	Windsor	Early College	6-12
Colorado International Language Academy	Colorado Springs	Language Immersion	K-6
Colorado Military Academy	Colorado Springs	Military Academy	PK-12
Colorado SKIES Academy**	Englewood	Project-Based Learning	6-8
Colorado Springs Charter Academy	Colorado Springs	Core Knowledge	K-8
Community Leadership Academy	Commerce City	Core Knowledge	PK-5
Coperni 3	Colorado Springs	Personalized Learning	K-8
Crown Pointe Academy	Westminster	Core Knowledge	K-8
Global Village Academy North	Northglenn	Language Immersion	K-8
Golden View Classical Academy	Golden	Classical	K-12
High Point Academy	Aurora	Wellness	PK-8
Kwiyagat Community Academy^	Towaoc	Project-Based Learning	K-4
Montessori del Mundo	Aurora	Dual-Language Montessori	PK-6
Monument View Montessori Charter School	Fruita	Montessori	PK-3
Mountain Middle School	Durango	Project-Based Learning	4-8
Mountain Song Community School	Colorado Springs	Waldorf	K-8
New America School Aurora	Aurora	Alternative Education Campus	9-12
New Legacy Charter School	Aurora	Alternative Education Campus	9-12
Pinnacle Charter School	Federal Heights	Core Knowledge	K-12
Prospect Academy^	Arvada	Personalized Learning	5-8
Ricardo Flores Magón Academy	Westminster	College Prep	K-8
Ross Montessori School	Carbondale	Montessori	K-8
Salida Montessori Charter School	Salida	Montessori	PK-8
Steamboat Montessori Charter School	Steamboat Springs	Montessori	PK-5
Stone Creek Charter School	Edwards/Gypsum	Core Knowledge	K-8
The Academy of Charter Schools	Westminster	College Prep	PK-12
University Prep Commerce City	Commerce City	Core Knowledge/College Prep	PK
Victory Preparatory Academy High School	Commerce City	Core Knowledge	9-12
Victory Preparatory Academy Middle School	Commerce City	Core Knowledge	6-8
Wildflower Montessori - Aurora	Aurora	Montessori	PK-2
Wildflower Montessori - Grand Valley*	Grand Junction	Montessori	PK-3

* = New School in 24-25; ** = Transferred to CSI in 24-25; ^ = Newly designated as an Alternative Education Campus (AEC)

WHO WE SERVE

CSI schools seek to offer high-quality programs that are available to all students. CSI's service to minority students, students eligible for free or reduced-price lunch, students with gifted abilities, and students with IEPs and 504s continues to trend upwards. CSI serves over 20k students in schools ranging from 24 (University Prep Commerce City) to 1,905 (Pinnacle Charter School).



AUTHORIZATION UPDATES

The CSI Board is statutorily responsible for considering applications for new, expansion, transfer, and renewal schools. During the 2024-25 school year, the CSI Board made the following authorization decisions:

APPROVED 4 NEW SCHOOLS

- 2.0 Schools Aurora (now VIVO) (opening Fall 2026)
- 2.0 Schools Colorado Springs (now VIVO) (opening Fall 2027)
- High Rockies Community School (opening Fall 2025)
- John Adams Academy Douglas County (opening Fall 2026)

APPROVED 2 TRANSFER SCHOOLS

- Battle Rock Charter School
- Global Village Academy - Aurora



New Legacy Charter School

APPROVED 8 RENEWAL SCHOOLS

- Ascent Classical Academy of Douglas County
- Ascent Classical Academy of Northern Colorado
- Colorado Springs Charter Academy
- Coperni 3
- Crown Pointe Academy
- New Legacy Charter School
- Prospect Academy
- Stone Creek Charter School

APPROVED 3 EXPANSIONS

- Montessori del Mundo (7th and 8th grade)
- Ascent Classical Academy of Northern Denver (homeschool program)
- Crown Pointe Academy (Preschool)

At the end of the 2024-25 school year, Colorado Military Academy transferred to its geographic district, and Colorado SKIES Academy closed.

PORTFOLIO OUTCOMES

STUDENT PERFORMANCE

Based on state student outcome data, 77% of CSI schools earned a Performance or Distinction rating in 2024-25, with nearly four out of five students enrolled in a Performance-rated school. The number of schools on Performance Watch declined, with just one school in Priority Improvement or Turnaround based on academic performance.

While CSI saw a slight dip in achievement and growth, scores in postsecondary and workforce readiness increased. Overall, CSI's graduation rate rose from 73.5% to 78.3%. Notably, CSI's graduation rate for special education students rose to 85.5% (up from 48.5% in 2022). CSI's dropout rate improved from 1.5% to 1.4%.

77%

of CSI schools earned
a Performance or
Distinction rating



Golden View Classical Academy, Caprock Academy, Colorado Early Colleges Douglas County North

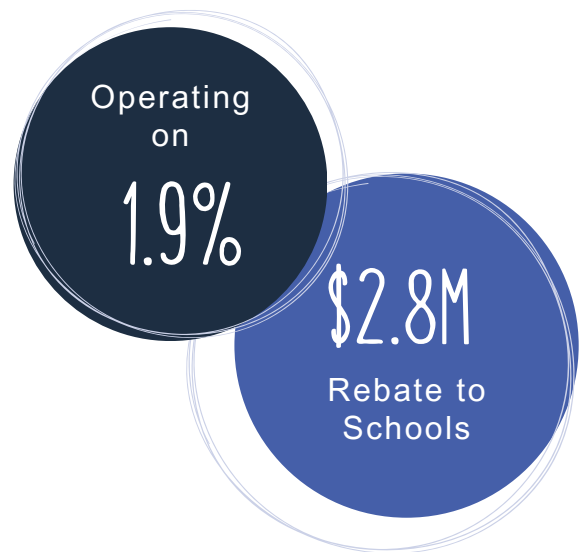
ORGANIZATIONAL HIGHLIGHTS

Financial Highlights

REBATE TO SCHOOLS

While statute allows CSI to collect 3% of per pupil revenue from authorized schools, CSI strives to operate well below 3% and return unused funds to its schools at the end of the year.

This past year, CSI operated on 1.9% and was therefore able to provide a rebate of \$132 per pupil, for a total of ~\$2.8M.



Operational Highlights

GRANTS

CSI schools earned 150 grants totaling \$32.3M. There was a slight overall increase in both total applications submitted and total awards received. Awards focused on dropout prevention, mental health, literacy, safety, school food, student pathways, and more.

150 GRANTS
\$32.3M

Three small blue triangles are positioned to the right of the text.

SCHOOL FACILITY ASSISTANCE PROGRAM (SFAP)

CSI schools secured 34 awards for the School Facility Assistance Program (SFAP), which was the largest share of SFAP awards statewide!



ORGANIZATIONAL HIGHLIGHTS

SCHOOL FOOD AUTHORITY

CSI's School Food Authority (SFA) continues to grow, serving students at 38 schools, including five district-authorized charter public schools. Currently, about 82% of CSI schools participate in a federal nutrition program. Of these, 66% are part of CSI's SFA while the remainder partner with district SFAs or Charter Choice.

The CSI Nutrition Team works closely with schools to align food service with their priorities—such as local sourcing, culturally relevant menus, and scratch cooking—while also supporting them in designing sustainable programs tailored to their staffing, facilities, and vendor access.

Through these efforts, participating schools served more than 412,000 breakfasts, 1 million lunches, and 11,000 after-school snacks, marking a significant increase from the prior year.



412K BREAKFASTS 1 MILLION LUNCHES 11,000 SNACKS



UNIVERSAL PRESCHOOL

CSI also continues to expand access to universal preschool. Fifteen CSI-authorized preschools participated in the program, with one additional preschool completing licensure and three more preparing to follow. Once approved, half of all CSI elementary schools will offer preschool programs.

To address statewide staffing shortages, CSI schools piloted a shared Early Childhood Special Education (ECSE) model—pooling staff expertise across multiple preschools. This innovative, collaborative approach allowed schools to better serve students while navigating limited resources. Building on its success, CSI and school partners are exploring similar shared-service solutions with additional providers for future years.

CAREER AND TECHNICAL EDUCATION

Additionally, several schools engaged students in career and technical education (CTE) offerings:

- 911 students were enrolled in CTE courses
- 116 students completed industry certifications
- 84 students completed work-based learning

Photo: Ross Montessori School

INNOVATION IN AUTHORIZING

CSI'S ROLE IN FOSTERING INNOVATION

At CSI, we believe innovation and accountability go hand in hand. As a statewide charter public school authorizer, we create space for bold ideas by removing unnecessary barriers, tailoring our processes, and partnering with other authorizers, agencies, and organizations to bring transformative school models to life. We champion strategies that rethink how to meaningfully improve student outcomes. Our approach to authorizing is both rigorous and flexible, ensuring that every school proposal receives the support and evaluation it deserves.

FLEXIBLE APPLICATION PROCESS

We recognize that no two school proposals are alike. Our model-agnostic application process is designed to remove barriers and tailor supports for diverse applicant teams. Applicants receive personalized consultation and feedback from expert review teams—whether they are proposing a new rural microschool or expanding an existing network to a new community. Our evaluation also includes a focus on whether the application is responsive to the specific needs of the community.

YEAR ZERO SUPPORTS

Once a school is approved, CSI provides Year Zero supports for the school during its planning year. Monthly check-ins, contract milestones, and specialized supports ensure schools are ready to serve students on day one. Innovations such as CSI's interest-free line of credit program and facility consultation address common barriers like delayed grant funding and construction challenges.

PILOTING INNOVATION

CSI has established a pilot process for schools to test non-traditional measures of success. Schools propose, implement, and evaluate innovative metrics like competency-based progress, workforce readiness, or social-emotional growth that become part of their body of evidence for board decisions. This approach ensures accountability while creating space for unique mission-driven outcomes.

"Innovation in education involves rethinking traditional approaches to teaching, learning, and school operations."

At CSI, innovation is not limited to new technologies or teaching methods; it encompasses any strategy that significantly improves student outcomes, particularly for underserved populations."

*Photos: Colorado International Language Academy, Golden
View Classical Academy, Colorado Early Colleges Fort Collins*





INNOVATION IN PRACTICE

CSI's commitment to innovation is best seen in how we partner with schools to bring bold ideas to life:

- **Colorado Early Colleges (CEC)** built on strong early-college outcomes by piloting single-district online programs and, with CSI's tailored review process, expanding to a multi-district online school—now one of Colorado's highest-performing online schools.
- **Kwiyagat Community Academy** located on the Ute Mountain Ute Reservation in Towaoc used CSI's adapted application process to honor tribal sovereignty. CSI brought in a reviewer with tribal expertise and co-developed waivers and contracts to meet both state standards and community priorities.
- **New Legacy Charter School** in Aurora Serving transitioned to a competency-based model with CSI's support in navigating graduation guidelines and accountability requirements. The school developed a new competency-based report card now embraced by many colleges and employers.
- **Prospect Academy** in Arvada developed an internal accountability framework tracking both academic outcomes and student engagement to better serve students who learn differently. CSI encouraged integration of these measures into the annual review process, ensuring student well-being is central to performance evaluation.



INNOVATION AT CSI SCHOOLS

FROM IDEAS TO PRACTICE

While CSI has worked to adjust structures and practices to foster innovation, CSI schools, too, have been working to translate innovative ideas into practical strategies that improve outcomes for students. There are examples of promising practices from across the CSI portfolio, showing how schools are redefining what success looks like. Unique approaches to leadership, instruction, and operations have resulted in expanded access, strengthened academic outcomes, and engaged communities.

EXPANDING ACCESS

Schools are designing creative solutions to ensure more students benefit from high-quality education:

- Flexible calendars and online options expand opportunities for students balancing work, family, or other commitments.
- Transportation solutions remove a common barrier for families in rural and suburban communities.
- Early childhood programs strengthen readiness by embedding inclusive supports from the start.
- Wrap-around care, food pantries, and expanded access to mental health services provide families and students with the resources they need to come ready to learn.

DEEPENING INSTRUCTION

Schools are rethinking the classroom experience to meet diverse learning needs:

- Competency-based approaches allow students to demonstrate mastery in ways that reflect real skills.
- Integrated academic and social-emotional supports provide scaffolds for students with learning differences.
- Career pathways and workforce partnerships prepare students for both college and employment.



Animas High School

"At CSI, we are proud to champion school-level ingenuity, share promising practices, and strike a balance between flexibility and accountability. Together with our schools, we are redefining what's possible in public education."



SCHOOL SPOTLIGHTS

Innovation flourishes when schools are empowered to design solutions for their unique students and communities:

- **AXIS International Academy** in Fort Collins implemented a transportation reimbursement program to increase equitable access for students who live outside of the school's established boundaries.
- **Coperni 3** in Colorado Springs developed an instructional model to guide delivery of targeted academic support for students with disabilities, providing necessary remediation through scaffolded small-group instruction.
- **Ricardo Flores Magón Academy** in Denver reimaged its approach to McKinney-Vento identification, transitioning from a single-liaison model to a team-based support system. This has led to a dramatic increase in the identification of and service to students experiencing housing insecurity.
- **The Academy of Arts & Knowledge** in Fort Collins launched a Community Learning Center staffed by school paraprofessionals, offering enrichment activities like violin, coding, and STEM clubs—strengthening both academics and after-school engagement.
- **The Academy of Charter Schools** in Westminster combined expanded learning time with a strong culture of staff stability and shared oversight to support students with disabilities, employing several full-time reading and math specialists trained in targeted intervention methods.

CSI's role is to continue to share these promising practices, support schools in scaling what works, and ensure that accountability frameworks recognize and reward diverse measures of success.



Prospect Academy, Caprock Academy, Coperni 3



LEGISLATIVE HIGHLIGHTS

MILL LEVY OVERRIDE EQUALIZATION

HB17-1375 required equitable sharing of local mill levy override revenue with district-authorized charter schools. Recognizing that CSI schools do not have access to local tax revenue, it created a mechanism whereby the Legislature could annually appropriate funds for CSI mill levy equalization. Since then, CSI and its dedicated partners have worked relentlessly to ensure parity for CSI-authorized charter public schools.

During the 2024 legislative session, HB24-1394 was passed, guaranteeing mill levy override funding parity between CSI schools and their district counterparts. In 2025, despite a \$1.2 billion statewide budget shortfall, CSI secured full mill levy equalization, advancing funding equity for CSI students across the state.



CSI SECURED A \$5 MILLION
INCREASE TO THE MILL
LEVY EQUALIZATION FUND

ALTERNATIVE EDUCATION CAMPUSES

Alternative Education Campuses (AECs) serve students who face unique challenges and often learn through non-traditional approaches. A new law, HB25-1167, expands opportunities for these schools by allowing them to serve parenting and pregnant students up to age 21, increasing access to state grant funding, and ensuring small schools don't lose their AEC designation because of minor enrollment shifts. The law also requires the state to share more information on AEC enrollment and student needs, helping ensure resources are better aligned to support these traditionally underserved students.



Ricardo Flores Magón Academy

AT-RISK FUNDING

Updates to the School Finance Act for 2025-26 increased base per pupil funding and maintained key supports for students most in need. Importantly, the bill protects at-risk supplemental aid for the next year and delays the rollout of a new way of counting at-risk students until 2026–27. This ensures schools serving high numbers of at-risk students have stable funding during the transition to Colorado's new school finance formula.

REPRESENTATION

One way in which CSI seeks to support and advocate on behalf of its portfolio of schools is through active engagement in committees, task forces, and working groups. CSI and CSI schools are represented by a variety of CSI staff in over 20 entities. Here are just a few:

- Colorado Association of Charter School Authorizers
- Colorado Department of Education
 - Accountability Work Group
 - Colorado Educator Preparation Advisory Committee
 - Colorado Special Education Advisory Committee
 - Healthy School Meals for All Focus Group
 - Induction Leaders Network
 - Multilingual Learners: A Collaborative Approach to Success 2024-2025 Professional Learning Community
 - Section 504 Collaborative
 - School Finance Task Force
 - Special Education Fiscal Advisory Committee
 - Specific Learning Disability Advisory Committee
 - State Advisory Council for Parent Involvement in Education
 - Technical Advisory Panel
- Colorado League of Charter Schools Governmental Affairs Committee
- Education Data Advisory Committee
- Mental Health State Advisory Board & Workforce Strategy Subcommittee
- National Association of Charter School Authorizers
- National Charter Schools Institute
 - A-GAME
 - Epicenter Advisory Group
- Statewide Assistive Technology Augmentative & Alternative Communication



OUR TEAM

Executive Director

Dr. Terry Croy Lewis

Communications, Data Submissions, & Human Resources Teams

Janet Dinnen, Chief of Staff

Julie Eddy, Senior Data Submissions Specialist

Cherish Trammell, Data Specialist

Ryan Hartung, Senior Data Submissions Specialist

Sheila Sellers, Data Quality & Audit Specialist

Amber Anderson, Data & Systems Specialist

Allegra Wenger, Director of Human Resources

Amanda Oberg, Senior Communications Manager & Board Liaison

Raena Vigil, Digital Communications Specialist



Authorization & Accountability Team

Ryan Marks, Chief of Authorizing & Accountability

Michael McManus, Authorization & Accountability Manager

Stephanie Aragon, Director of School Policy & Compliance

Finance & Operations Team

David Sever, Senior Director of Finance

Art Ford, School Finance Manager

Melissa Allen, Staff Accountant

Marcie Robidart, Director of Grants Fiscal & Accounting

Emma Post, Grant & Procurement Manager

Magaly Mar-Sotero, Grant & Accounting Technician

Shawn Wilkens, Grant & Accounting Technician

Ilene Agustin, Director of School Nutrition

Maggie Necaie, School Nutrition & Data Specialist

Maggie Smart, School Nutrition Specialist

School Programs Team

Jessica Welch, Chief of School Programs

Betsy Basch, Mental Health Programs Coordinator

Paul Cairney, Senior School Safety Specialist

Rachel Franks, English Language Development Coordinator

Kimberly Caplan, Director of School Programs

Kali Winn, Senior Assessment Specialist

Wilynn Webb, Early Learning & Induction Coordinator

Nick Stachokus, Director of Special Education

Brian Printz, 504 & School Nursing Coordinator

Cait Eggleston, Special Education Coordinator

Donna Day, Special Education Coordinator

Karen Davidson, Special Education Coordinator

Lora Bonney, Special Education Coordinator

Lynnette Steinhoff, Special Education Coordinator

Matt Hudson, Assistant Director of Special Education



CSI bid farewell to Andi Denton, Collin Phillips, and Tom McMillen.

OUR BOARD

CSI is governed by a Board of Directors appointed by the Governor of Colorado and the Commissioner of Education. The CSI Board is statutorily required to be mission-driven and politically balanced, which ensures steady leadership of our organization and stable oversight of our schools.



Andrew Karow
Board Treasurer



Dr. Brenda Dickhoner
Board Chair



Deborah Hendrix
Board Member



Damion LeeNatali
Board Member



Jill Anschutz*
Board Vice Chair



Kenny Smith
Board Member



Nick Thompson
Board Member



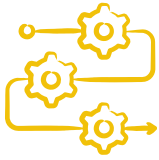
Nicholas Hernandez
Board Member



Ross Izard
Board Secretary

*Jill Anschutz completed her term in 2025. Liz Howell has been appointed by the Governor to fill the vacant seat.

LOOKING AHEAD



CONTINUING INNOVATION

As CSI looks to the future, we remain committed to fostering innovation that meets the evolving needs of students and communities. This means continuing to create space for schools to pilot bold ideas, supporting non-traditional measures of success, and partnering to remove barriers to implementation.

By balancing creativity with accountability, CSI will ensure that innovation is not just encouraged but sustained at both the school and authorizing level.



TIERS OF SUPPORT

CSI offers tiered supports, providing more intensive assistance to schools with greater needs. Building on this practice, we will expand our tiered model beyond academics to include governance, leadership, and operations, ensuring that every school has access to the right level of guidance and resources to thrive.




SMALL SCHOOLS INITIATIVE

CSI authorizes a disproportionate number of small schools as compared to district authorizers. In 2024-25, 18% of CSI schools served under 100 students, and CSI was the only authorizer to open a new school with under 100 students in the last 5 years.

At small schools, leaders often fill multiple roles, struggle with staffing, and face higher per-student costs for facilities, food service, and transportation. CSI has piloted a program where small schools share a special education staff member, and we are actively exploring ways to continue to support small schools—including finding creative solutions to help schools offer benefits to improve staff retention, implementing a centralized student information system, and offering grant writing assistance and scholarships.



Expanding Frontiers in Public Education

 303-866-3299

 www.csi.state.co.us

