

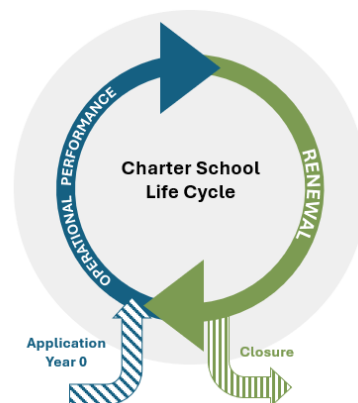
Access & Equity Throughout the Charter School Cycle



As a statewide charter school authorizer, the Colorado Charter School Institute (CSI) fosters high-quality educational options while prioritizing **access and equity** for all students.

We implement **targeted strategies** across the charter cycle to ensure that schools are serving historically underserved communities, including students of color, multilingual learners, students with special needs, and those eligible for free or reduced-price lunch (FRL).

CSI's portfolio of schools serves a student population that is reflective of the state average for emerging multilingual learners, students of color, and students with a 504 plan. And, importantly, CSI continues to increase service to students with special needs.



New School Applicants

CSI's new school application process prioritizes applicants proposing to serve higher percentages of students from **underserved populations** than local traditional public schools. Applicants must demonstrate clear evidence of **community need** and a plan to **close educational equity gaps**. During the review, applicants are evaluated on:



Commitment to serving students who are FRL-eligible, students of color, multilingual learners, and students with disabilities



Understanding of the statutory and regulatory requirements related to the identification, programming, monitoring, and evaluation of special populations



Providing details regarding how programming for special populations will be implemented in alignment with the school's proposed model

Year 0 Support for Newly Approved Schools

Applicants approved by the CSI Board work through a Year 0 process prior to opening their doors. In Year 0, CSI provides **tailored support** to newly approved schools to ensure that they are prepared to meet the needs of all students from the moment they open their doors. CSI regularly checks in with schools to ensure readiness across key areas, including equity, student services, and staffing for special populations.

Schools work with CSI to meet pre-opening milestones related to **equitable practices**, including enrollment, special education programming, and multilingual learner programming. For example, CSI reviews and provides feedback on enrollment and registration materials to ensure there are no undue barriers to enrollment. Additionally, CSI staff consults with the founding team on the development of program plans to ensure the appropriate implementation of identification, evaluation, and monitoring of special populations.

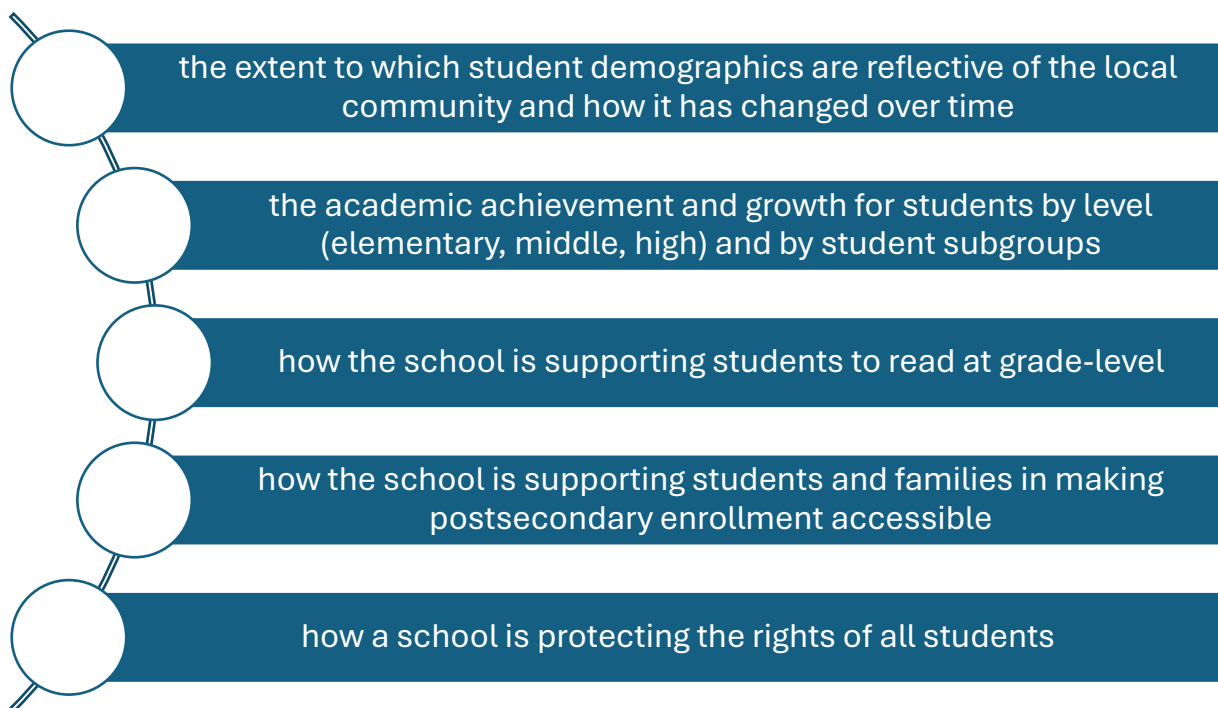
Ongoing Monitoring & Accountability for Existing Schools

Once schools are operational, CSI employs annual performance evaluations, regular program implementation reviews, and tiered supports and monitoring to continuously oversee and support school performance, with a strong focus on **access and equity**.

Annual Performance Review

Schools are assessed annually through the **CSI Annual Review of Schools (CARS)** to ensure they are serving all students effectively, with specific metrics around enrollment diversity and student outcomes including academic performance.

Schools are assessed annually to ensure they are serving all students effectively, with specific metrics evaluating:



Program Implementation Review

Schools undergo program reviews by content experts focusing on key student subgroups, including students with special needs, multilingual learners, and students from low-income backgrounds. CSI uses detailed data analysis to **identify and address gaps in service to underserved populations**, and tailors its supports and interventions to align with school needs.

Tiered Supports and Monitoring

Through **comprehensive planning, monitoring, and tiered support and oversight**, CSI ensures that its authorized charter schools are committed to providing **equitable and accessible** high-quality education opportunities to all students, from application to ongoing operation.
