

# Annual Report

2022-2023



***CHAMPIONING  
CHARTERS***



*Colorado Early Colleges Aurora*

**Our mission is to foster  
high-quality charter public  
school choices for **all** students.**



# Table of Contents

---

Welcome Letter	4
Who We Are	6
Our Why	7
Who We Serve	8
Organizational Performance	10
Championing Charters	12
Looking Ahead	17
Our Team	19

# Welcome Letter

Dear Friends,

We are eager to share our 2022-23 year-in-review with you!

Our annual report theme – **“Championing Charters”** – reflects our focus on uplifting Charter School Institute schools, stories, and communities while remaining true to our mission – to foster high-quality charter public school choices that serve *all* students.

Our 43 charter public schools continue to champion high-quality educational opportunities for students across the state of Colorado, offering 16 unique school models to over 20,000 students in 24 towns and cities.

Without question, championing charters was a clear theme coming out of the 2022-23 school year:

## ***Championing Charters in the Legislative Session***

We saw significant wins during the 2023 legislative session due to ongoing advocacy from CSI staff, CSI schools and school communities, and education partners. With strong support from bipartisan legislators and the Governor, CSI schools will see an additional \$10M added to the CSI Mill Levy Equalization Fund in 2023-24. These additional funds will be tremendously impactful and will help address one of the highest priorities for our schools - hiring and retaining high-quality staff.

Importantly, the legislature has also committed to full Mill Levy Equalization beginning in 2024-25! This is a massive victory in the 6+ year long fight for funding equity for students attending CSI schools.







**An important aspect of championing charter schools is working alongside our schools to address the very real barriers to equitable, high-quality educational opportunities.**

---

### ***Championing Charters through Representation***

This year, CSI prioritized championing charter voices by ensuring active engagement in various committees, working groups, and task forces. In fact, nearly a quarter of CSI staff represented CSI and the charter voice at the state and national levels. Our voices will continue to be heard as we guarantee CSI schools' interests are considered by decision-makers.

### ***Championing Charters through Supports***

An important aspect of championing charter schools is working alongside our schools to address the very real barriers to equitable, high-quality educational opportunities. CSI continues to offer operational, leadership, and programmatic supports to its schools. This past year, additional supports were established in the areas of facilities, nutrition, governance, teacher mentoring and induction, Year 0, mental health, multilingual learners, and Universal Preschool.

We hope you enjoy this annual report, and we look forward to your ongoing support and partnership as we continue to *champion charters*!

**Jill Anschutz**

CSI Board Chair

**Dr. Terry Croy Lewis**

CSI Executive Director

# Who We Are

## Our Mission

Our mission is to foster high-quality charter public school choices for all students.

## Our Vision

Our vision is to be recognized as the nation's most effective charter school authorizer by building a portfolio of high-performing charter public schools that use innovative educational designs to serve all students.

## What is an Authorizer?

An authorizer is an entity approved by the state legislature to:

- 1) open new charter schools;
- 2) monitor existing charter schools; and
- 3) close failing schools.

Charter schools are accountable to their charter authorizer for meeting local, state, and federal requirements.

**Fundamental principles** of authorizing include:

- **Access** to high-quality school options for all students
- **Autonomy** for schools to best meet the needs of their students
- **Accountability** for schools in meeting high expectations

## CSI's Roles

CSI serves several roles, which require it to fulfill additional monitoring requirements above and beyond what might be required of an entity that is solely an authorizer.



Authorizer



Local Education Agency



Administrative Unit



School Food Authority



Fiscal Agent



# Our Why

At CSI, we believe that all children should have access to high-quality school options and that families should be able to choose the schools that best meet the unique needs of their children.

## *THAT'S OUR WHY.*

Recognizing that each person's "why" for choosing their charter school is unique, we continue to highlight the personal stories of CSI students, parents, school leaders, and staff on our website.



**"New Legacy gave me confidence to ask for help...The staff taught me to advocate for myself."**

**Bianca**

*Student, New Legacy Charter School*

**"We chose AXIS partially for the cultural experience that he would get to be immersed in every day."**

**Chase Pittman**

*Parent, AXIS International Academy*



**"I love being here. I work with great people and I love bringing kids to their fullest potential."**

**Lorna Floyd**

*Staff, Academy of Arts & Knowledge*

# Who We Serve

CSI schools seek to offer a high-quality program that is available to all students. Within our traditional school programs, CSI's service to students of color, students eligible for free or reduced-price lunch, students with giftedness, and students with IEPs and 504s continues to trend upwards.

**43**  
Schools

**20,461**  
Students

**24**  
Locations

CSI serves over 20k students in schools ranging from 48 (Kwiyagat Community Academy) to 1939 students (The Pinnacle School).

**50%**

Students of Color



**9%**

Students  
with IEPs

**5%**

Students with  
504 Plans

**15%**   
English Learners

**4%**

Students with  
Gifted Abilities



**36%**

Students Eligible for  
Free or Reduced-  
Price Lunch



# CSI Portfolio

School	City	Model	Grades Served
Academy of Arts & Knowledge	Fort Collins	Arts Integration	K-5
Animas High School	Durango	Project-based Learning	9-12
Ascent Classical Academy Douglas County	Lone Tree	Classical	K-12
Ascent Classical Academy Northern Colorado	Fort Collins	Classical	K-10
AXIS International Academy	Fort Collins	Language Immersion	PK-6
Caprock Academy	Grand Junction	Classical	K-12
Colorado Early Colleges Aurora	Aurora	Early College	9-12
Colorado Early Colleges Colorado Springs	Colorado Springs	Early College	6-12
Colorado Early Colleges Douglas County	Parker	Early College	9-12
Colorado Early Colleges Fort Collins	Fort Collins	Early College	9-12
Colorado Early Colleges Fort Collins West	Fort Collins	Early College	6-12
Colorado Early Colleges Online Learning Campus*	Online	Early College	6-12
Colorado Early Colleges Windsor	Windsor	Early College	6-12
Colorado International Language Academy	Colorado Springs	Language Immersion	K-6
Colorado Military Academy	Colorado Springs	Military Academy	PK-12
Colorado Springs Charter Academy	Colorado Springs	Core Knowledge	K-8
Community Leadership Academy	Commerce City	Core Knowledge	PK-5
Coperni 2	Colorado Springs	Personalized Learning	K-8
Coperni 3	Colorado Springs	Personalized Learning	K-8
Crown Pointe Academy	Westminster	Core Knowledge	K-8
Early College of Arvada	Arvada	Early College	6-12
Global Village Academy Northglenn	Northglenn	Language Immersion	K-8
Golden View Classical Academy	Golden	Classical	K-12
High Point Academy	Aurora	Wellness	PK-8
James Irwin Charter Academy	Colorado Springs	Core Knowledge	K-5
Kwiyagat Community Academy	Towaoc	Project-Based Learning	K-2
Montessori del Mundo	Aurora	Dual-Language Montessori	PK-6
Monument View Montessori Charter School	Fruita	Montessori	PK-3
Mountain Middle School	Durango	Project-Based Learning	4-8
Mountain Song Community School	Colorado Springs	Waldorf	K-8
New Legacy Charter School	Aurora	Alternative Education Campus	9-12
Prospect Academy*	Arvada	Personalized Learning	5-8
Ricardo Flores Magon Academy	Westminster	College Prep	K-8
Ross Montessori School	Carbondale	Montessori	K-8
Salida Montessori Charter School	Salida	Montessori	PK-8
Steamboat Montessori Charter School	Steamboat Springs	Montessori	PK-6
Stone Creek Charter School	Edwards/Gypsum	Core Knowledge	K-8
The Academy of Charter Schools	Westminster	College Prep	PK-12
The New America School – Aurora	Aurora	Alternative Education Campus	9-12
The Pinnacle Charter School	Federal Heights	Core Knowledge	K-12
Thomas MacLaren School	Colorado Springs	Classical	K-12
Victory Preparatory High School	Commerce City	Core Knowledge	9-12
Victory Preparatory Middle School	Commerce City	Core Knowledge	6-8

\*new school in 2022-23



# Organizational Performance

## Academic Highlights

### Achievement

**CMAS:** CSI schools saw an **improvement** in the percentage of students meeting or exceeding expectations in both English Language Arts and Math compared to 2022 and remain comparable to the state averages.

**PSAT/SAT:** CSI schools **performed higher** than the state average across Evidenced-Based Reading and Writing as well as Mathematics across all tested grades.

### Growth

CSI schools demonstrated **growth** comparable to the state for English Language Arts, Math, and PSAT/SAT.



While the state results show significant growth gaps remaining for multilingual learners and their peers who are not multilingual learners, this was not the case for CSI.

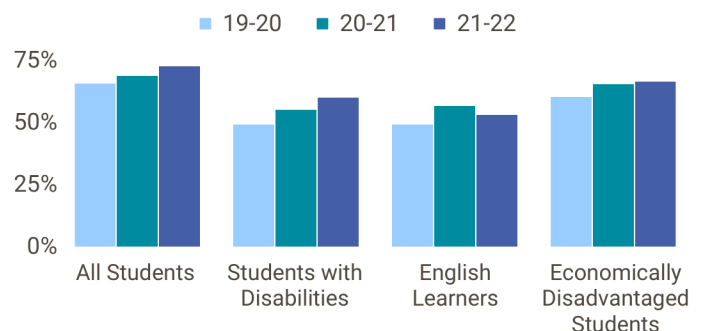
In fact, the growth gap between multilingual learners and their peers in CSI schools has decreased or been eliminated across many grade levels.

Ascent Classical Academy of Northern Colorado

## Postsecondary Outcomes

- CSI's graduation rate continues to improve year over year.
- CSI's dropout rate has remained below the state's average dropout rate of 2%. CSI had a **1.3% dropout rate** at the end of the 2021-2022 school year

### 4-Year Graduation Rate



# Organizational Outcomes

## Financial Highlights

### Rebate to Schools

While statute allows CSI to collect 3% of per pupil revenue from authorized schools, CSI strives to operate well below 3% and return unused funds to its schools at the end of the year.

This past year, CSI operated on 1.9% and was therefore able to provide a rebate of **\$115 per pupil**, for a total of nearly \$2.3M.

**1.9%**

Operations

**\$2.3M**

Rebate to Schools

### Assistance Fund

The Assistance Fund was created by the General Assembly to assist CSI schools with capital construction and reasonable emergency financing in the form of interest free loans or grants.

Through the CSI Assistance Fund, CSI was able to allocate \$200,000 in the form of grants or loans across 2 schools to support with safety, construction and student supports.

## Operational Highlights

### Grants

CSI schools earned 107 grants totaling \$16.9M, which is a significant increase from the prior year. Some of the highest awards focused on capital construction, school and social emotional health, instruction and expanded learning opportunities.

**107**  
Grants

=

**\$16.9M**



Photos from left to right:  
AXIS International  
Language Academy,  
Animas High School,  
Colorado Military  
Academy, Ascent  
Classical Academy of  
Northern Colorado

# Championing Charters

## *in Legislative Session*

Because of the continued advocacy from CSI staff, CSI schools and school communities, education partners, and the strong support of legislators and the Governor, the 2022-23 Legislative Session brought significant wins for CSI schools. CSI schools will see:



Access to rural funding for CSI schools located in rural districts (~\$169 per pupil).



Additional charter capital construction funding.



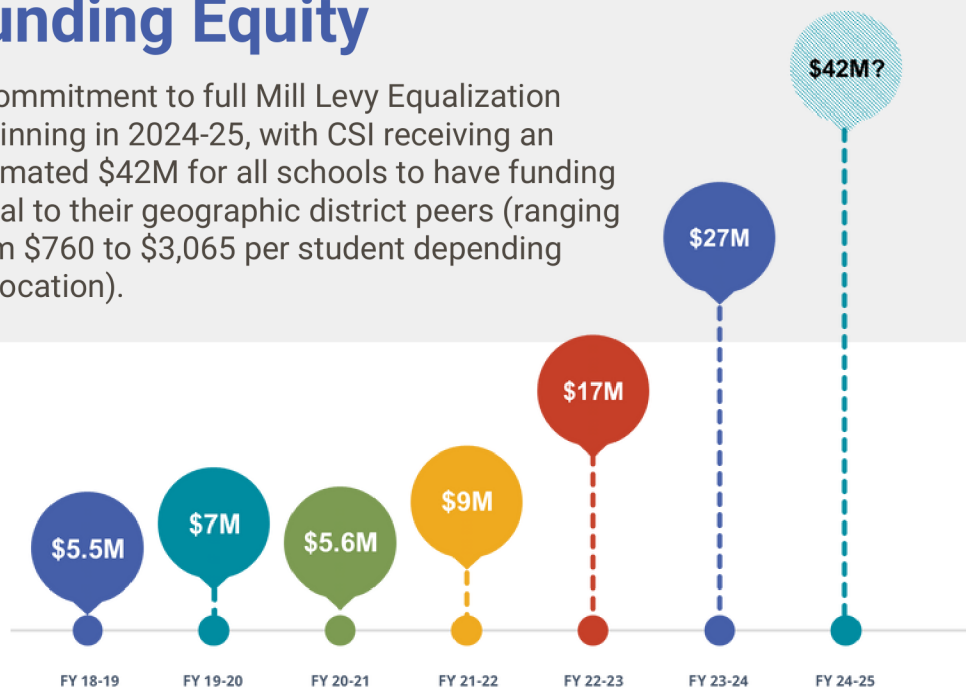
Access to five-year enrollment averaging for CSI schools experiencing declining enrollment. Across CSI, this results in a roughly \$6.5M increase.

# +\$10M

An additional \$10M to the CSI Mill Levy Equalization Fund for a total of \$27M in 2023-24, which will result in approximately \$1,400 per student on average for CSI schools next school year (unless capped by geographical district's mill levy override).

## Funding Equity

A commitment to full Mill Levy Equalization beginning in 2024-25, with CSI receiving an estimated \$42M for all schools to have funding equal to their geographic district peers (ranging from \$760 to \$3,065 per student depending on location).





# Championing Charters

## *through Representation*

One way in which CSI seeks to champion the charter voice is through its active engagement in committees, working groups, and task forces. In fact, nearly a quarter of CSI staff represented CSI and the charter voice at the state and national level.

- Alliance for Kids and Joint Initiatives UPK Subcommittee
- CDE Accountability Work Group
- CDE Blended Learning Initiative Work Group
- CDE Data Standardization Work Group
- CDE Financial Policies and Procedures Committee
- CDE Technical Advisory Panel for Longitudinal Growth
- Colorado Equity Alliance
- Colorado Special Education Advisory Committee (CSEAC)
- Educational Data Advisory Committee
- ESSA State Committee of Practitioners
- Industry Committee for the Colorado School Nutrition Association
- National Alliance for Public Charter Schools' Preschool Advisory Board
- National Charter School Institute AGAME Early Adopters
- New At-Risk Measure Work Group
- Quality Standards Committee at the Colorado Department of Early Childhood
- State Advisory Council for Parent Involvement in Education

**Based on CSI's leadership role in authorizing, it's unique authorizing context, and the opportunity to impact thousands of students in communities served at CSI schools, NACSA selected CSI to participate in its first Leadership in Action Cohort. The cohort focused on rethinking the new school application process by gathering existing and emerging practices and learning from fellow authorizers.**



CSI Staff Members

# Championing Charters

## *through Operational Supports*

### School Food Authority

In the 2022-23 school year, CSI's School Food Authority continued to expand, providing meals to students across 24 schools, two of which were district-authorized charter schools.



**179k**  
**Breakfasts**

**558k**  
**Lunches**

**8k**  
**Snacks**

CSI's Nutrition Team partners with participating schools to understand their goals (local sourcing, culturally relevant menus, scratch cooking) and supports schools in implementing sustainable food programs based on their unique context (staffing, facilities, and the availability of local vendors). Through this partnership, over 700,000 meals and over 8,000 snacks were served.

### Facility Supports

This past year, CSI has established formalized facilities supports for its portfolio of schools. Supports have ranged from:

- Site walks with Year 0 schools to ensure construction/renovation is progressing appropriately
- Support with safety grants, including BEST, to provide CSI schools access to much needed capital construction funding
- Consultation with schools in identifying adjustments for safer schools, space for education interventions, fluid meal service, and more.



Photos from left to right:  
Colorado Early Colleges  
Windsor, Thomas MacLaren,  
Colorado Military Academy



# Championing Charters

## *through Leadership Supports*

### **School Governing Boards**

CSI believes that behind every successful charter school is a high-performing governing board. CSI supports the advancement of its school governing boards through training, facilitation, and networking opportunities hosted throughout the year and across the state.

This past year, CSI expanded its support for school governing boards, attending more than 30 school board meetings and hosting 6 trainings for school board members, ranging in topics from school leader evaluation to strategic planning.

### **Year 0 Supports**

CSI supports begin upon contract approval. Year 0 is the period of time in which CSI supports newly approved applicants as they take their proposal outlined in the charter application and transform it into a school that is ready to serve students on day one. This year, CSI staff supported three schools through Year 0 to a successful opening.

### **Teacher Mentoring and Induction**

CSI partnered with PEBC to offer a two-year Evidence-Based Mentor Training Program, which kicked off in the 2022-23 school year. Twelve CSI schools joined the program, which included participation in a Mentoring and Coaching Institute, monthly professional learning communities, classroom observations, and an end-of-year workshop. In its first year, the program trained 34 mentor teachers, and 33 new-to-profession teachers received mentoring.

One participant shared an observable impact resulting from this program:



**More confident and encouraged teachers bring a joy of teaching to their students.**

# Championing Charters

## *through Programmatic Supports*

### **Mental Health and School Wellness**

CSI hosted its first ever Wellness Summit in Spring 2023 centering on the theme: *What would your school look like well?* Over 41 school staff from 20 schools attended the daylong gathering that included topics such as a preview of a wellness toolbox, using data to inform wellness, and wellness through continuous improvement.

### **Multilingual Learners**

CSI hired its first full-time English Language Development Coordinator in 2022-23, drastically expanding capacity for oversight and support of multilingual requirements and programming in schools. CSI's traditional school programming serves a slightly higher (15%) percentage of multilingual learners than the state average (12%).

### **Universal Preschool**

CSI cultivated partnerships with agencies across the state to ensure that CSI schools were represented in planning conversations and to foster information sharing and networking around implementation of universal preschool.

All 12 of CSI-authorized preschools have chosen to participate in the upcoming inaugural year of universal preschool, so families can access tuition credits for enrolling their four-year-olds.



Prospect Academy



Ricardo Flores  
Magon Academy



Ross Montessori  
Charter School



Golden View  
Classical Academy

# Looking Ahead



## 20th Anniversary

CSI was established in 2004 as a response to the growing demand for charter schools within the state and an underserved population of at-risk students for whom innovative educational choices were needed.

In its 20th year, CSI will continue to uphold its mission and seek additional ways to serve as a model authorizer.



## Funding Equity

CSI schools will receive an additional \$10 million through the Mill Levy Equalization Fund. Additionally, CSI received a commitment for full parity beginning the 2024-25 school year.

CSI will continue its push for funding equity until all students attending CSI schools have access to the same level of funding as their district peers.



Mountain Song Community School



# Our Board

CSI is governed by a Board of Directors appointed by the Governor of Colorado and the Commissioner of Education. The CSI Board is statutorily required to be mission-driven and politically balanced, which ensures steady leadership of our organization and stable oversight of our schools.

## Authorization Decisions

The CSI Board is statutorily responsible for considering applications for new, expansion, transfer, and renewal schools. During the 2022-23 school year, the CSI Board made the following authorization decisions:

- Approved 5 new school applications (3 schools scheduled to open in the Fall of 2023, and 2 scheduled to open in the Fall of 2024)
- Approved 7 renewal schools



**Andrew Karow**  
Board Treasurer



**Brenda Dickhoner**  
Board Vice Chair



**Deborah Hendrix**  
Board Member



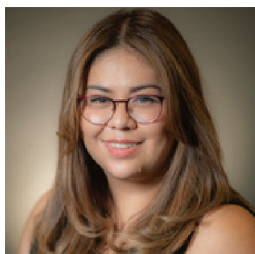
**Eric Lerum\***  
Board Secretary



**Jill Anschutz**  
Board Chair



**Kenny Smith**  
Board Member



**Maribel Obrique**  
Board Member



**Nicholas Martinez**  
Board Member



**Ross Izard**  
Board Member

*Damion LeeNatali has been appointed to fill the seat formerly held by Eric Lerum, whose term ended July 1, 2023.*

# Our Team

## **Executive Director**

Dr. Terry Croy Lewis

## **Communications, Data Submissions, & HR/Office Team**

Janet Dinnen, Chief of Staff  
Amanda Oberg, Communications Manager & Board Liaison  
Raena Vigil, Digital Communications Coordinator  
Julie Eddy, Data Manager  
Ryan Hartung, Data Specialist  
Cherish Trammell, Data Specialist  
Allegra Wenger, Human Resources Manager  
Magaly Mar-Sotero, Office Administrator

## **Authorization & Accountability Team**

Ryan Marks, Chief of Authorizing & Accountability  
Michael McManus, Authorization and Accountability Manager  
Collin Phillips, Performance & Accountability Analyst  
Kali Winn, Assessment Coordinator

## **Finance & Operations Team**

Andi Denton, Chief of Finance & Operations  
Art Ford, School Finance Manager  
Cassie Walgren, Data Pipeline Tech  
David Sever, Controller  
Ilene Agustin, School Nutrition Program Manager  
Maggie Necaie, School Nutrition and Data Coordinator  
Marcie Robidart, Grants Fiscal & Accounting Manager  
Emma Post, Senior Grants and Procurement Analyst  
Shawn Wilkens, Grants & Accounting Technician  
Melissa Allen, Staff Accountant

## **Legal & Policy Team**

Anastasia Hawkins, Director of Governance\*  
Stephanie Aragon, Director of Policy

## **School Programs Team**

Jessica Welch, Senior Director of School Programs  
Kimberly Caplan, Director of Professional Learning & School Programs  
Rachel Franks, English Language Development Coordinator  
Betsy Basch, Mental Health Program Specialist  
Wilynn Webb, Early Learning & School Support Coordinator  
Matt Hudson, Director of Special Education  
Nick Stachokus, Assistant Director of Special Education  
Donna Day, Special Education Coordinator  
Josh Nichols, Special Education Coordinator  
Brian Printz, Special Education Coordinator

*\*CSI bid farewell to Anastasia Hawkins as she continued on in her professional journey.*





Expanding Frontiers in Public Education



303-866-3299



[www.csi.state.co.us](http://www.csi.state.co.us)