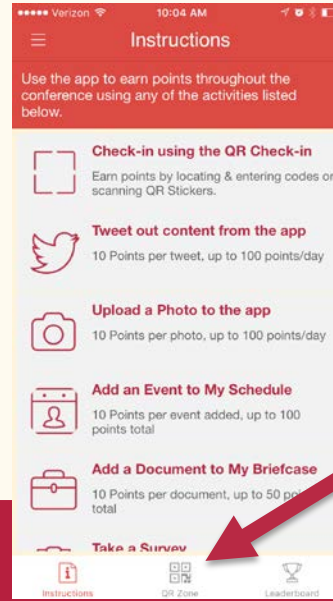
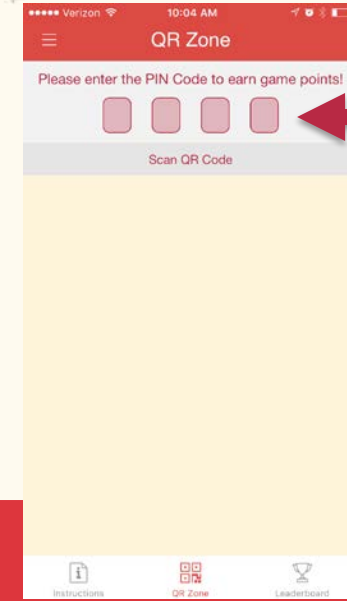


**GO TO THE
GAME CENTER**



**CLICK "QR
ZONE"**



**ENTER YOUR
SESSION'S PIN**

SESSION NAME: By the Numbers: What Do We Know About School Closure Around the Country?

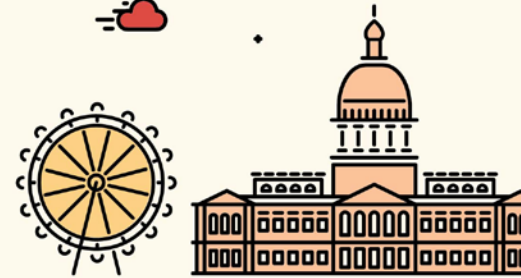
SESSION PIN:

3000

**LET YOUR
PRESENTERS
KNOW YOU'RE
HERE, AND EARN
POINTS!**

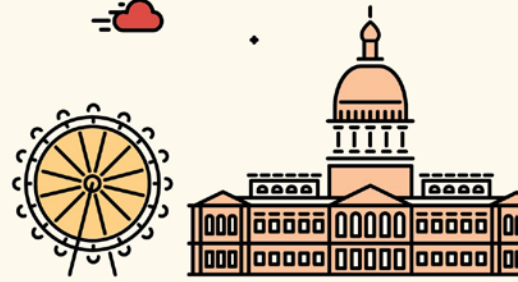


STAND TOGETHER TO FACE THE FUTURE



2016 NACSA LEADERSHIP CONFERENCE | ATLANTA, GA

BY THE NUMBERS: WHAT DO WE KNOW ABOUT SCHOOL CLOSURES ACROSS THE COUNTRY?



MEET OUR PANEL

- Sean Conlan, Director of Research and Evaluation, NACSA
- Harry Lee, Chief Strategy Officer, iLearn Schools
- Heather Mauzé, Director of Charter School Administration, Texas Education Agency
- Ryan Marks, Director of Evaluation and Assessment, Colorado Charter School Institute

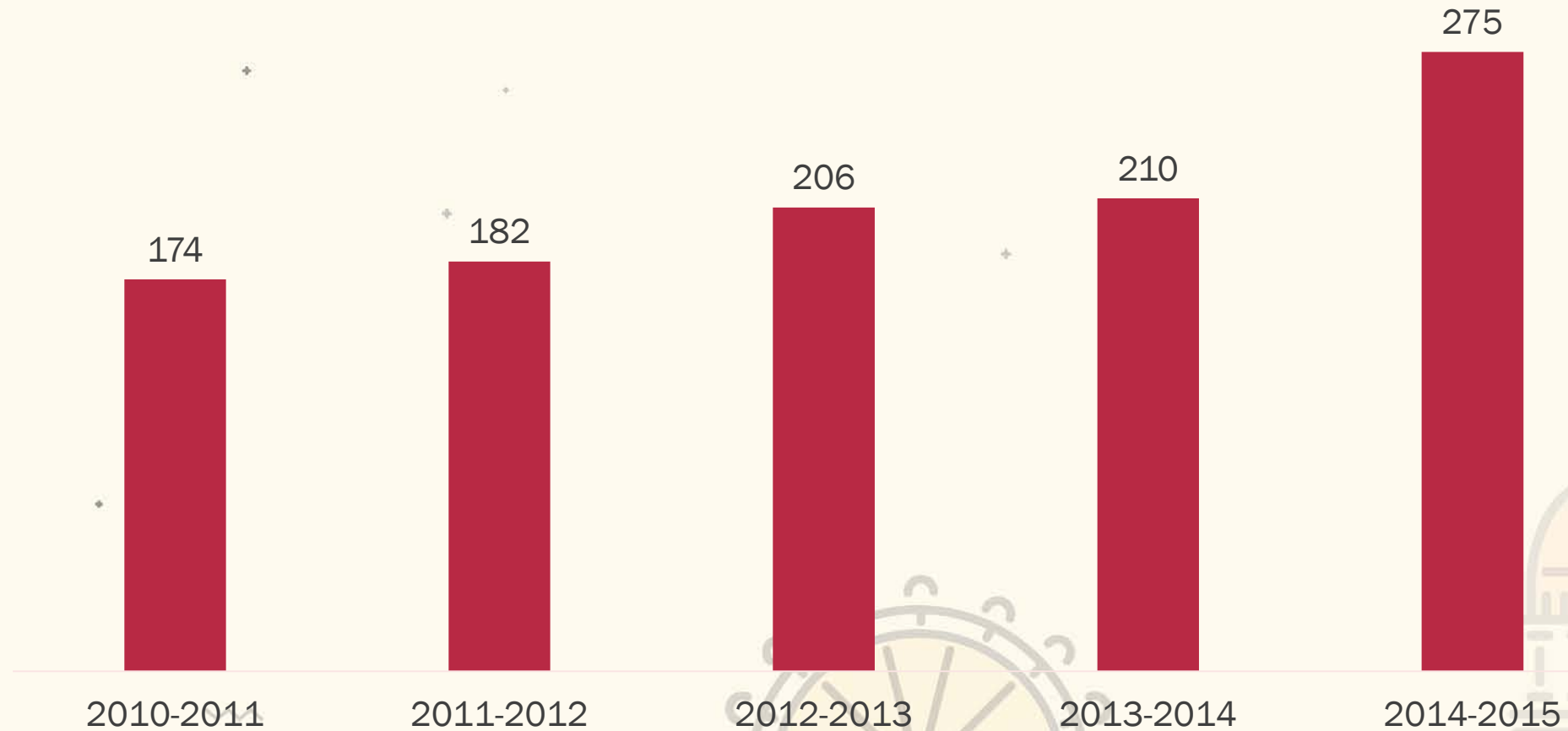


SESSION PLAN

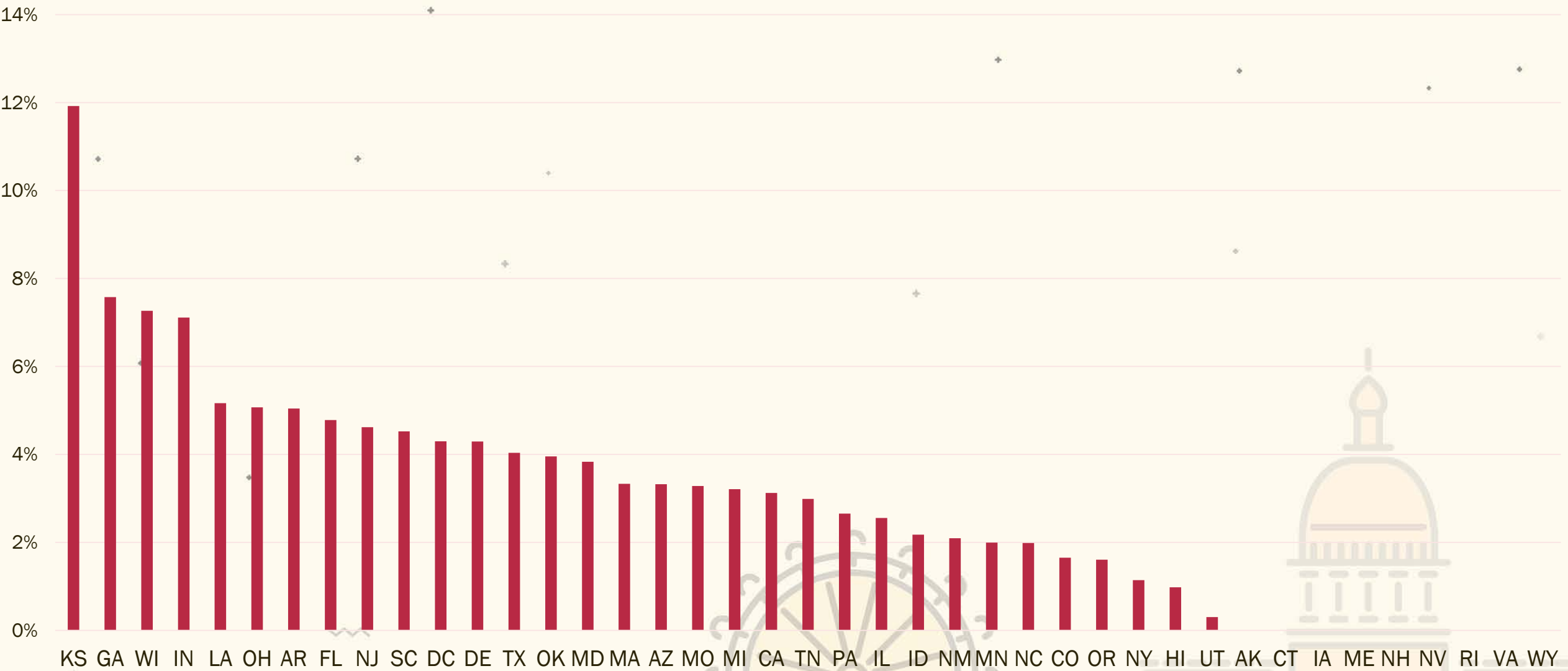
- Brief overview of closure rates.
- Introduction to our panelists.
- State context, closure rates, and charter school quality
- Small group discussion
- Report-out



CHARTER CLOSURES NATIONALLY

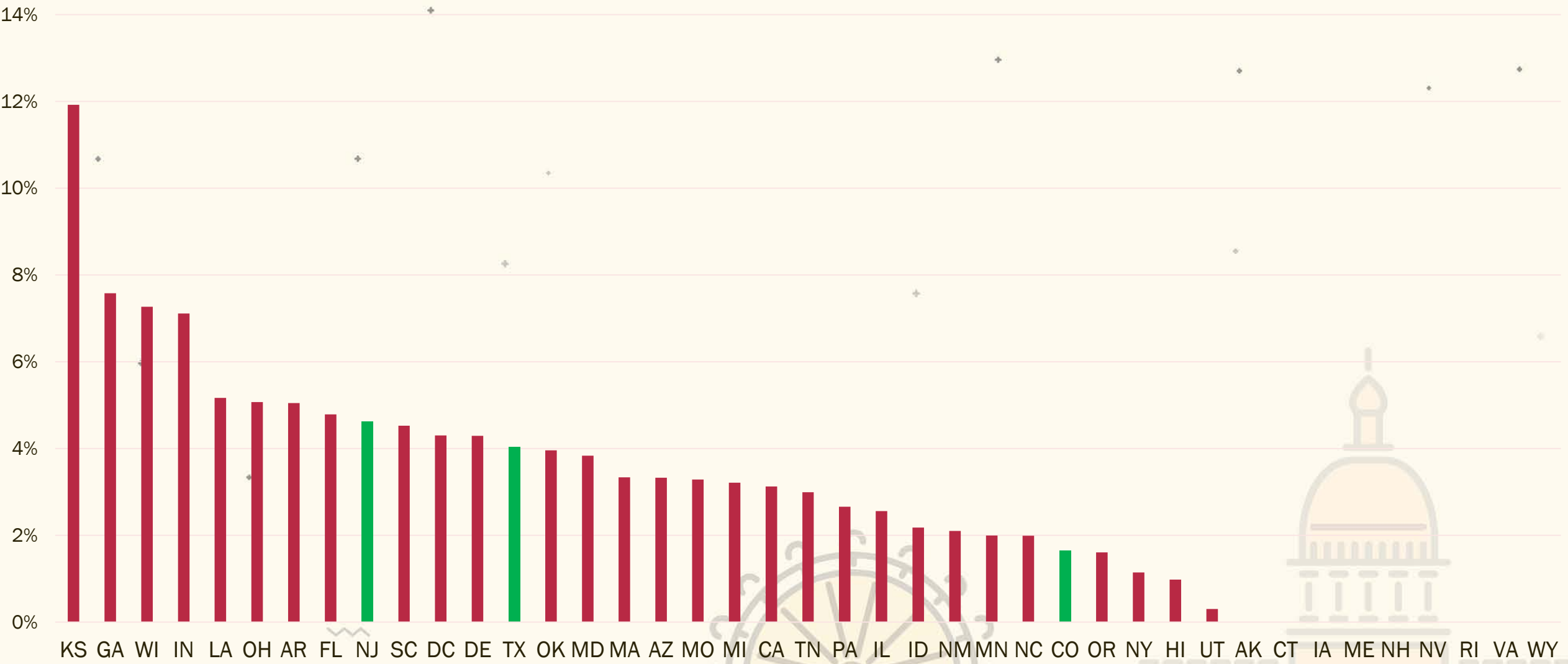


3 YEAR AVERAGE CLOSURE RATE



#NACSAcon

3 YEAR AVERAGE CLOSURE RATE



#NACSAcon

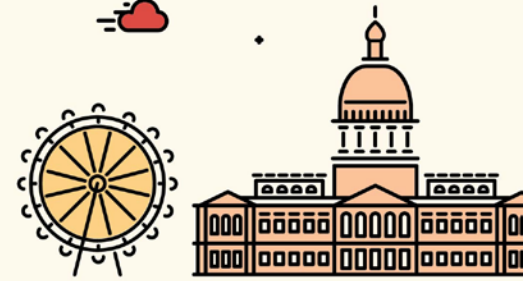
QUESTIONS

- Why is there variation in closure rates across states?
- Is closure used differently in each state or driven by different factors?
- How have charter school closures impacted the quality of charter schools in each state?



NEW JERSEY DEPARTMENT OF EDUCATION

HARRY LEE



#NACSAcon

NJDOE AUTHORIZING CONTEXT

Mission

- The New Jersey Department of Education (NJDOE), Office of Charter Schools (OCS) provides **New Jersey families** with **quality schools**. OCS authorizes charter schools consistent with **national best practice** in charter school authorizing, offering school operators **autonomy** and opportunities for **innovation** in exchange for **accountability** for **student outcomes**.

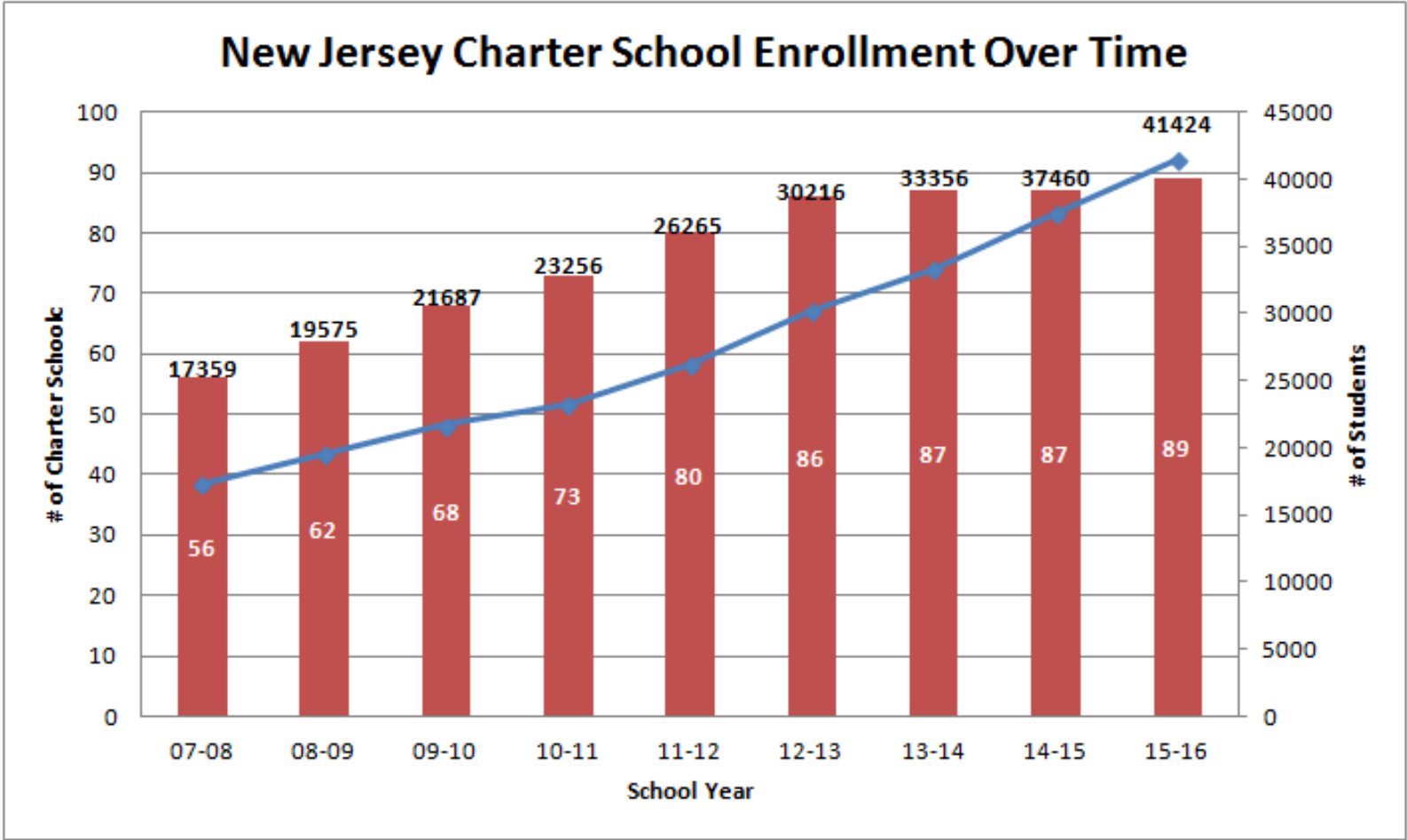
Authorizer Overview

- NJDOE is the **state education agency** and **sole authorizer** of charter schools in New Jersey.
- **Commissioner of Education**, appointed by the **Governor**, has **final authority** in the approval, opening, monitoring and renewal of charters in New Jersey.

The Numbers

- **88** charter schools serving **approximately 46,000** students, or **3%** of the public school students in the state.
- Charter schools are serving **nearly 40%** of the public school population in **Newark** and **Camden**.
- Since 2010, **17 charter schools** have been closed due to academic, fiscal or organizational reasons.

CHARTER SCHOOL ENROLLMENT



Year	# of Schools Closed
2012	3
2013	5
2014	4
2015	2
Total	14

Since 2010, 42 new charter schools have opened and 17 have been closed.

NJDOE CORE VALUES

Core Value #1

Focus on student outcomes: We use the Performance Framework to focus everyone's attention on student achievement; all other considerations are secondary.

ACADEMIC TIERS

Charter School Academic Tiers

Tier 1

- Replication or Expansion
(Schools must demonstrate consistent academic success and capacity to grow)

Tier 2

- Intervention Considered

Tier 3

- Site Visits
- Board Meetings
- Probation / Remedial Plan
- Non-Renewal or Revocation

KEY STEPS

Key Steps for New Jersey

- Develop mission and core values
- Create performance framework to evaluate school quality
- Develop a tier rank system
- Differentiate oversight based on tier
- Collect evidence and prepare (internal/external) for the closure process as early as possible

KEEP IN TOUCH

Harry Lee

Chief Strategy Officer, iLearn Schools



haroldslee@gmail.com



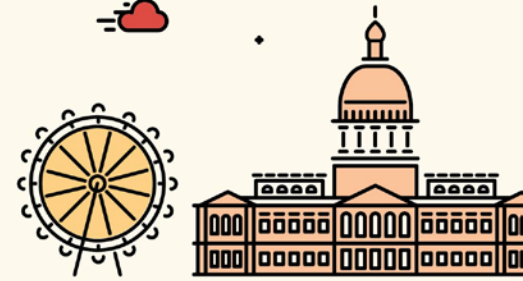
609.672.3308

#NACSAcon



TEXAS EDUCATION AGENCY

HEATHER MAUZÉ



#NACSAcon

Mission

The Texas Education Agency (TEA), Division of Charter School Administration cultivates **innovative, high-quality learning** opportunities and empowers the charter school community through **leadership, guidance, and support**. Texas charter schools exist to improve **student learning**; increase the **choice** of learning opportunities within the public school system; create professional opportunities that will attract **new teachers** to the public school system; establish a new form of **accountability** for public schools; and encourage **different** and **innovative** learning methods.

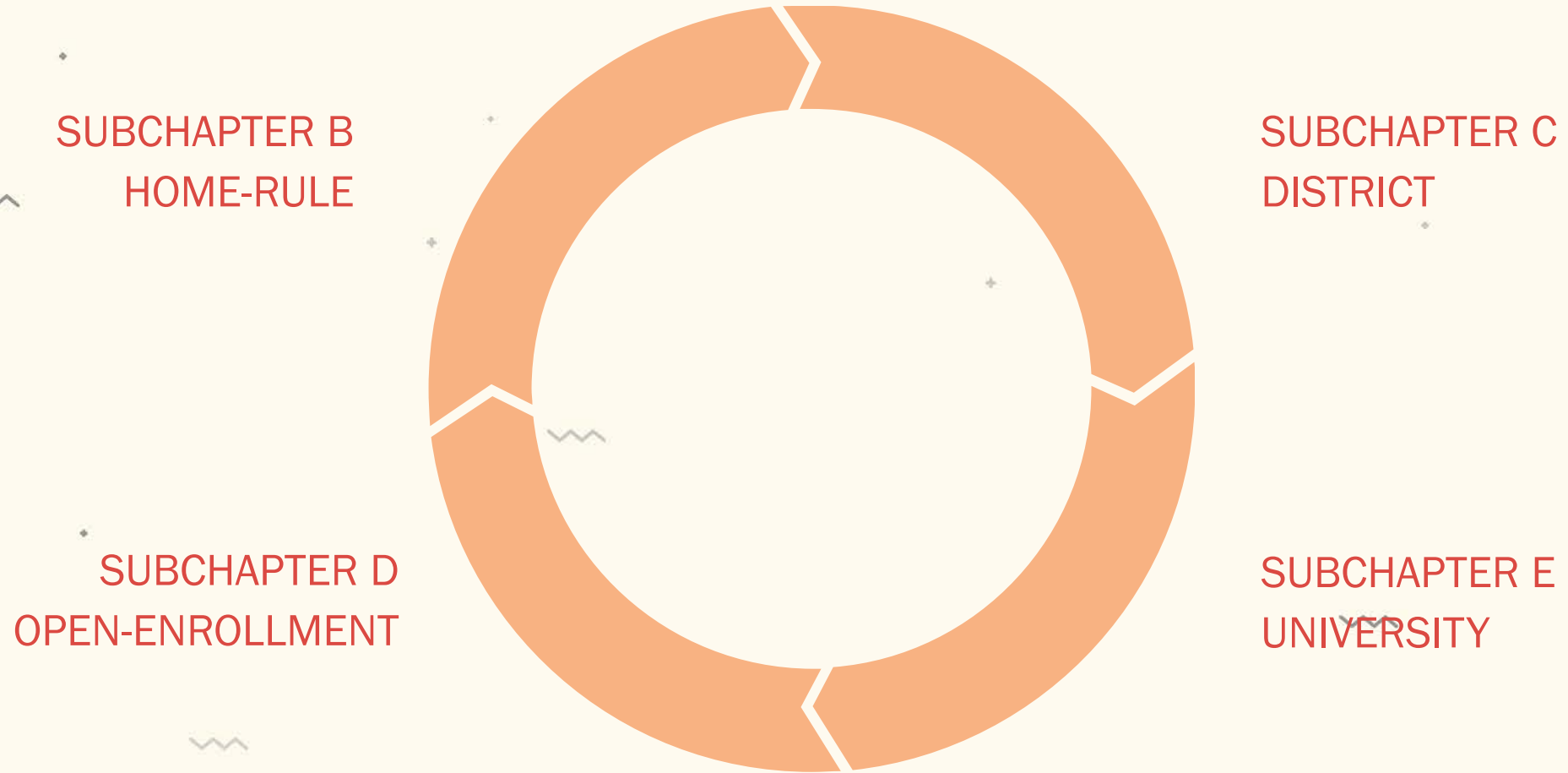
Authorizer Overview

- There are **4 categories** of charter schools in the state.
- Texas Education Agency is the **sole authorizer** of **open-enrollment** and **university** charter schools in Texas. Traditional districts' boards of trustees may authorize **district** charter campuses. There are no **home-rule** charters.
- Charters schools may be **single-campus** charter schools or **multiple-campus** charter schools.
- **Commissioner of Education**, appointed by the **Governor**, has **final authority** in opening, monitoring, renewing, and revoking of charters in Texas.
- **Commissioner of Education** has **proposal authority** for the award of a charter.
- **The State Board of Education**, elected by constituents, has **veto authority** over the commissioner's proposal.

The Numbers

- **255** charter schools with **701** campuses serving **approximately 285,000** students, or **5.4%** of the public school students in the state.
- Since 1998, **53 charter schools** have been closed due to academic, fiscal or organizational reasons; more than half of those closures have occurred in the last three years (**28**).

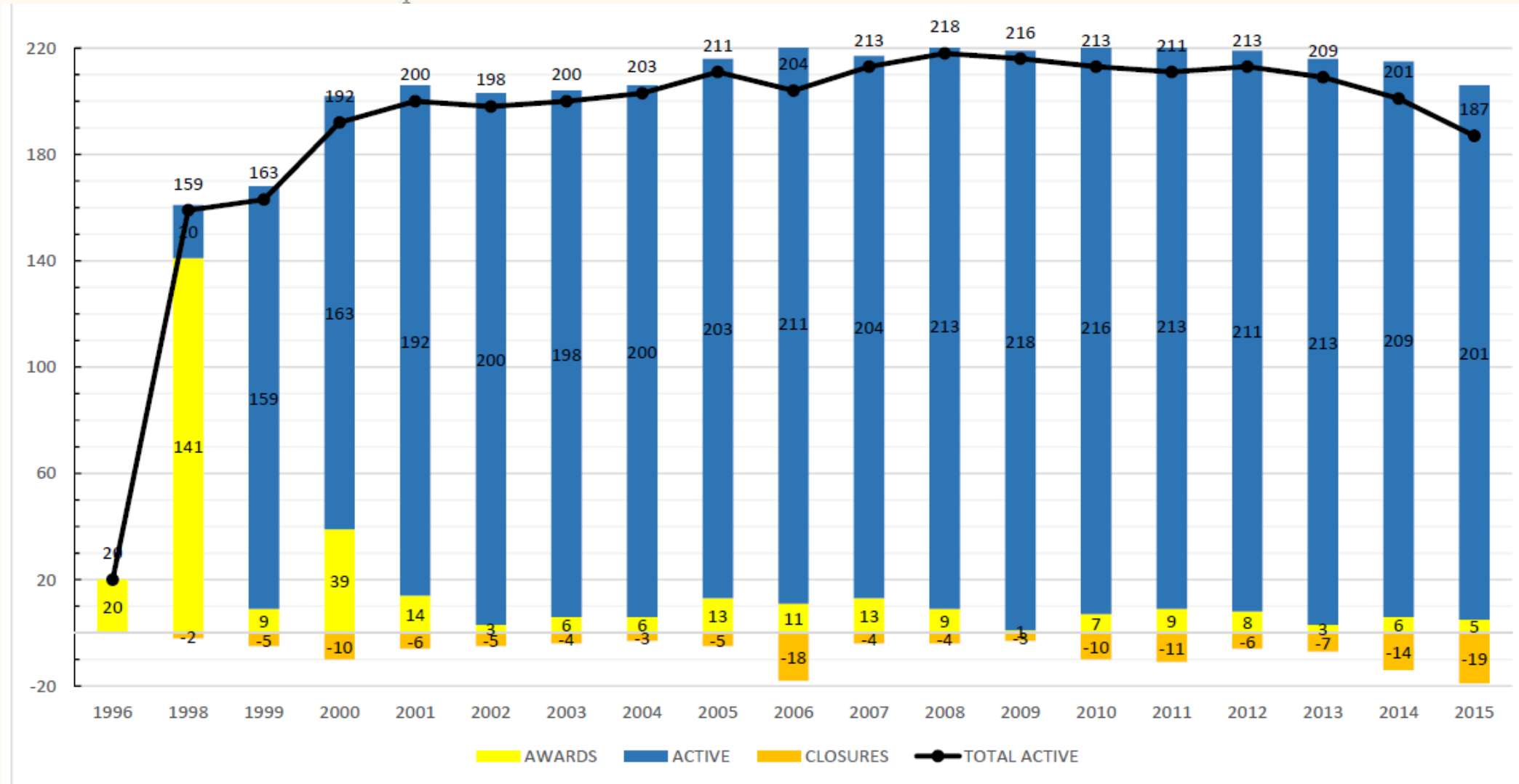
4 CATEGORIES OF CHARTERS

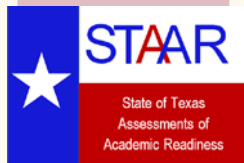


Texas Open-Enrollment Charter School Over Time



Charter Awards and Closures Over Time





STAAR

Academic Performance

4 Indexes, 12 distinctions



Charter FIRST

Financial Rating System of Texas



Performance Framework (CSPF)

- Academic
- Financial
- Operational

Improving Student Outcomes

“Student outcomes don’t change until adult behaviors do.”

KEEP IN TOUCH

Heather Mauzé

Director of Charter School Administration, Texas Education Agency



Heather.Mauze@tea.texas.gov



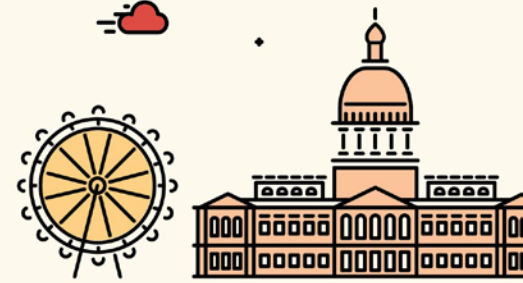
512.463.9075

#NACSAcon



COLORADO CHARTER SCHOOL INSTITUTE

RYAN MARKS



#NACSAcon

AUTHORIZING CONTEXT – COLORADO CHARTER SCHOOL INSTITUTE

Mission

The mission of the Charter School Institute shall be to foster high-quality public school choices offered through

- Institute charter schools that deliver rigorous academic content and high academic performance in a safe environment and on par with the highest performing schools, including particularly schools for at-risk students.

Vision

The vision of CSI is to be a national leader as a highly effective charter school authorizer by building a portfolio of high performing public charter schools through authorizing practices that promote a variety of successful and innovative educational designs, including an emphasis on schools that serve at-risk youth.

Authorizer Overview

The Colorado Charter School Institute (CSI) was created by the Colorado State Legislature in 2004. CSI is governed by a nine-member Board of Directors. Seven members are appointed by the governor and two by the commissioner of education. CSI began operations in February 2005 approving two charter schools.

COLORADO NUMBERS

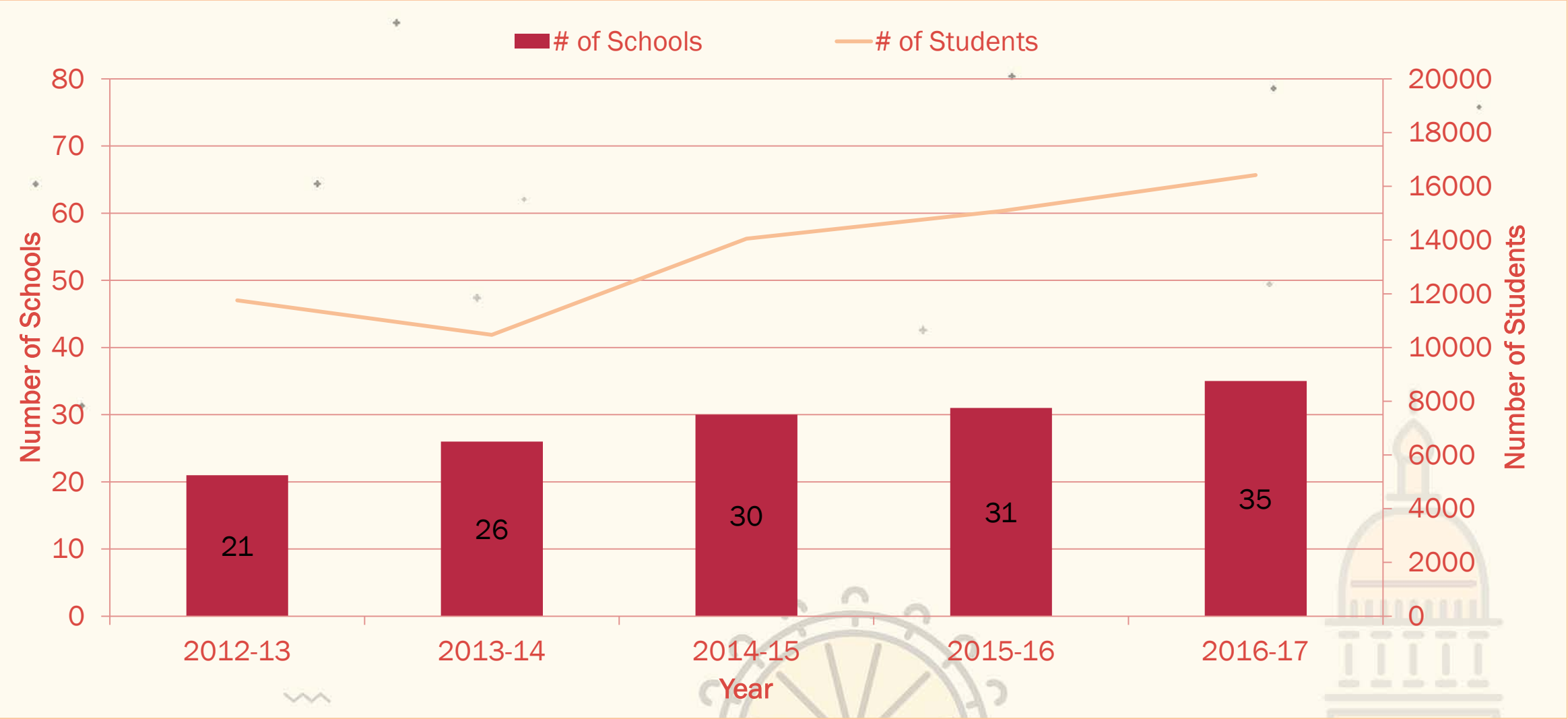
- There are 45 district authorizers in Colorado and CSI is the statewide, non-district charter school authorizer
- In 2015-16 there were 226 charter schools operating in Colorado
- Charter school enrollment represents just over 12% of the total statewide PK-12 public school enrollment
- There have been 50 charter schools closes since the first charter was authorized in 1993.

#NACSAcon

CSI Numbers

- Authorizes 35 charter schools across the state serving 20 cities/towns enrolling more than 1 students
- CSI schools enroll about 14% of charter school students in Colorado
 - Closed 3 schools since operations began in 2005 and one school has been non-renewed and close at the end of the

CSI PORTFOLIO



IMPLICATIONS OF SCHOOL PERFORMANCE

Accreditation Plan Type	Renewal	Expansion/Replication	Transfer
<div>Top 25% in CO</div> <div>Performance with Distinction</div>	<ul style="list-style-type: none"> 5 Year Renewal <p>Based on factors to include: Performance over time by level (EMH)</p>	<ul style="list-style-type: none"> Approval; with conditions or milestones if applicable <p>Based on factors to include: Variation from existing model Number of years of data</p>	<ul style="list-style-type: none"> 5 Year Contract; with conditions or milestones if applicable <p>Based on factors to include: Performance over time by level (EMH)</p>
<div>46% of schools in CO</div> <div>Performance</div>	<ul style="list-style-type: none"> 3 to 5 Year Renewal; with contract milestones where applicable <p>Based on factors to include: Performance over time by level (EMH)</p>	<ul style="list-style-type: none"> Approval Conditional Approval <p>Based on factors to include: Performance over time by level (EMH) Variation from existing model Evidence of need and support At-risk service</p>	<ul style="list-style-type: none"> 3 to 5 Year contract; with conditions or milestones where applicable <p>Based on factors to include: Performance over time by level (EMH)</p>
<div>17% of schools in CO; bottom 1/3</div> <div>Improvement</div>	<ul style="list-style-type: none"> 3 Year Renewal; with contract milestones where applicable 2 Year Performance Contract <p>Based on factors to include: Performance over time by level (EMH)</p>	<ul style="list-style-type: none"> Denial 	<ul style="list-style-type: none"> 2-3 Year Performance Contract Denial <p>Based on factors to include: Performance over time by level (EMH) At-Risk Service</p>
<div>Bottom 12% in CO</div> <div>Priority Improvement and Turnaround</div>	<ul style="list-style-type: none"> 1 Year Performance Contract Nonrenewal at Year's End Nonrenewal w/1Year Wind Down <p>Based on factors to include: Performance over time by level (EMH) Length of Time on PI/T</p>	<ul style="list-style-type: none"> Denial 	<ul style="list-style-type: none"> Denial* <p>*Consideration may be given based on circumstance</p>

KEEP IN TOUCH

Ryan Marks

Director of Evaluation and Assessment, Colorado Charter School Institute



ryanmarks@csi.state.co.us



303.866.2572

#NACSAcon



STATE CONTEXT BREAK OUT GROUPS

- New Jersey and strategic authorizing.
- Texas and the impact of legislation.
- Colorado and the challenges to closing schools.

