

Shaping the Charter Narrative: An Authorizer's Story

Janet Dinnen, Chief of Staff

Dr. Terry Croy Lewis, Executive Director

Colorado Charter School Institute



Who's in the room?



Introductions





What will we accomplish in the next 90 minutes?

- Discuss the existing charter narrative and what makes it effective
- Learn about CSI's journey to prioritize communications and to help shape the narrative
- Gain practical strategies to apply within your organization



What is the existing charter narrative in your community?



What is the existing charter narrative?

Charter schools are not held accountable.

Charter schools are not public schools.

Charter schools don't enroll children from underserved families.

Charter schools cream or cherry-pick the best students from traditional public schools.

Charter school students do not perform any better than their peers attending district schools.



The existing charter narrative is...

- Clear
- Compelling
- Consistent



By Jonathan Chait  @jonathanchait

By Jonathan Chait  @jonathanchait



Answer Sheet • Analysis



The professional journal for educators

Sign up for our newsletter

f t in

About *

Write For Us ▼

Archive

[Login/Join PDK](#)

Q Search

The Grade

Jessicah Lahitou

reconsidering the charter school segregation narrative

ly 31, 2019



ated Press story went viral, a new Chalkbeat story highlights the need to page.

Associated Press (AP) published a report on racial **segregation within charter** schools, which quickly became one of the more controversial pieces of education journalism in the country. The report, which stated that "despite growing numbers in racial isolation," the story conveyed a sense of urgency about "extreme" racial segregation happening in American charter schools. The report found that just 4 percent of traditional public schools had a 99 percent non-white student body, while 10 percent of charter schools had a 99 percent non-white student body.

COLUMNS & BLOGS

CAREER CONFIDENTIAL

Phyllis L. Fagell

Phyllis L. Fagell
Should the PTA produce a hot dads
calendar to raise funds?
September 3, 2019

September 3, 2019

ON LEADERSHIP
by Robert B. Starr

Joshua P. Starr

Joshua P. Starr
Meeting charter schools in the middle
July 16, 2019

July 10, 2017

THE GRADE
by Joe Russo

Alexander Russo

A brain drain in education journalism

August 23, 2019

UNDER THE LAW

Julie Underwood

Julie Underwood
The education legacy of Justice John
Paul Stevens
July 24, 2019

July 24, 2019

 WASHINGTON VIEW





One Authorizer's Experience

Setting the Scene

- Statewide charter authorizer
- Data-driven team



Setting the Scene

- Regional media networks
- Technical writing vs. persuasive writing







Our Journey





Our Journey





Prioritizing Communications

- Staff
- Time
- Training
- Collaboration
- Platforms
- Buy-in

Workshop: Prioritizing Communications

Share strategies that your authorizing office can (or does) use to prioritize communications





Our Journey





Why Key Messages?

Clear

Compelling

Consistent





Key Message Development

- Content
 - Mission, vision
 - Key organizational themes and initiatives
 - Commons misperceptions or areas of confusion
 - Prove points with additional info (fact, quote, story)
- Style
 - Simple language (no jargon, abbreviations)
 - Short sentences



Key Messages

Theme	Messaging: These are options to choose from
History	<ul style="list-style-type: none"> In response to the growth of students, and an interest in the Colorado State Legislature "CSI has had a long history of providing the Charter School Institute"
Model Diversity	<ul style="list-style-type: none"> CSI believes that every student has unique needs of their school CSI schools offer a variety of models: Waldorf, Classical, Montessori, etc.
Serving All Students	<ul style="list-style-type: none"> CSI is committed to the success of all students, particularly those who are at-risk CSI takes an individualized approach to learning CSI has prioritized the development of financial resources CSI's portfolio of schools includes students with diverse backgrounds, low-income, and students with special needs While lower than district schools, CSI continues to grow
Autonomy & Accountability	<ul style="list-style-type: none"> The CSI approach to autonomy CSI offers its schools the freedom to meet the needs of their students, academic, financial, and operational
Autonomy	<ul style="list-style-type: none"> CSI offers its schools the freedom to meet the needs of their students and community
Accountability	<ul style="list-style-type: none"> CSI provides schools with the freedom to operate, while ensuring they are held accountable for their students' success
Model Authorizer	<ul style="list-style-type: none"> CSI assists school districts in implementing authorizing best practices To fulfill its role as a model authorizer, CSI continues to find and promote ways to partner with school districts to improve school outcomes through high-quality charter school authorizing
Funding Equity	<ul style="list-style-type: none"> CSI believes that public school students should receive equitable access to public funds regardless of the type of public school in which a student is enrolled Students attending CSI schools deserve the same level of access to public school resources as their peers that attend district schools CSI students have access to 75 percent less funding than their district peers

CSI Key Messages

2019 Update



The following key messages about CSI are organized by theme. Some themes contain multiple key messages, so users can identify the most appropriate for their intended audience. These messages will be shared primarily through our publications, website and social media.

Mission	<ul style="list-style-type: none"> Abbreviated mission: Our mission is to foster high-quality charter public school choices, particularly those closing the achievement gap. Statutory mission: The mission of the Charter School Institute shall be to foster high-quality public school choices offered through institute charter schools that deliver rigorous academic content and high academic performance in a safe environment and on par with the highest-performing schools, including particularly schools for at-risk students.
Vision	<ul style="list-style-type: none"> Abbreviated vision: Our vision is to be recognized as the nation's most effective charter school authorizer by building a portfolio of high-performing charter public schools that use innovative educational designs to serve all students. Original vision: The vision of the Charter School Institute is to be a national leader as a highly effective charter school authorizer by building a portfolio of high-performing charter public schools through authorizing practices that promote a variety of successful and innovative educational designs, including an emphasis on schools that serve at-risk youth.
Value Statement	<ul style="list-style-type: none"> We believe that our singular focus on charter schools translates into tailored customer service, a keen understanding of the unique nature of charter schools, and the ability to better advocate for the needs of charter schools and their students.
About CSI	<ul style="list-style-type: none"> The Colorado Charter School Institute (CSI) is a statewide charter school authorizer committed to creating and sustaining a portfolio of high-quality school options that meet the needs of all students. <ul style="list-style-type: none"> CSI authorizes 40 schools across Colorado, from Durango to Steamboat Springs and Fruita to Colorado Springs, serving over 18,000 PK-12 students. CSI understands charter schools and advocates for their success. CSI offers support, flexibility, and transparent accountability to ensure its schools are in the best position possible to serve their students.





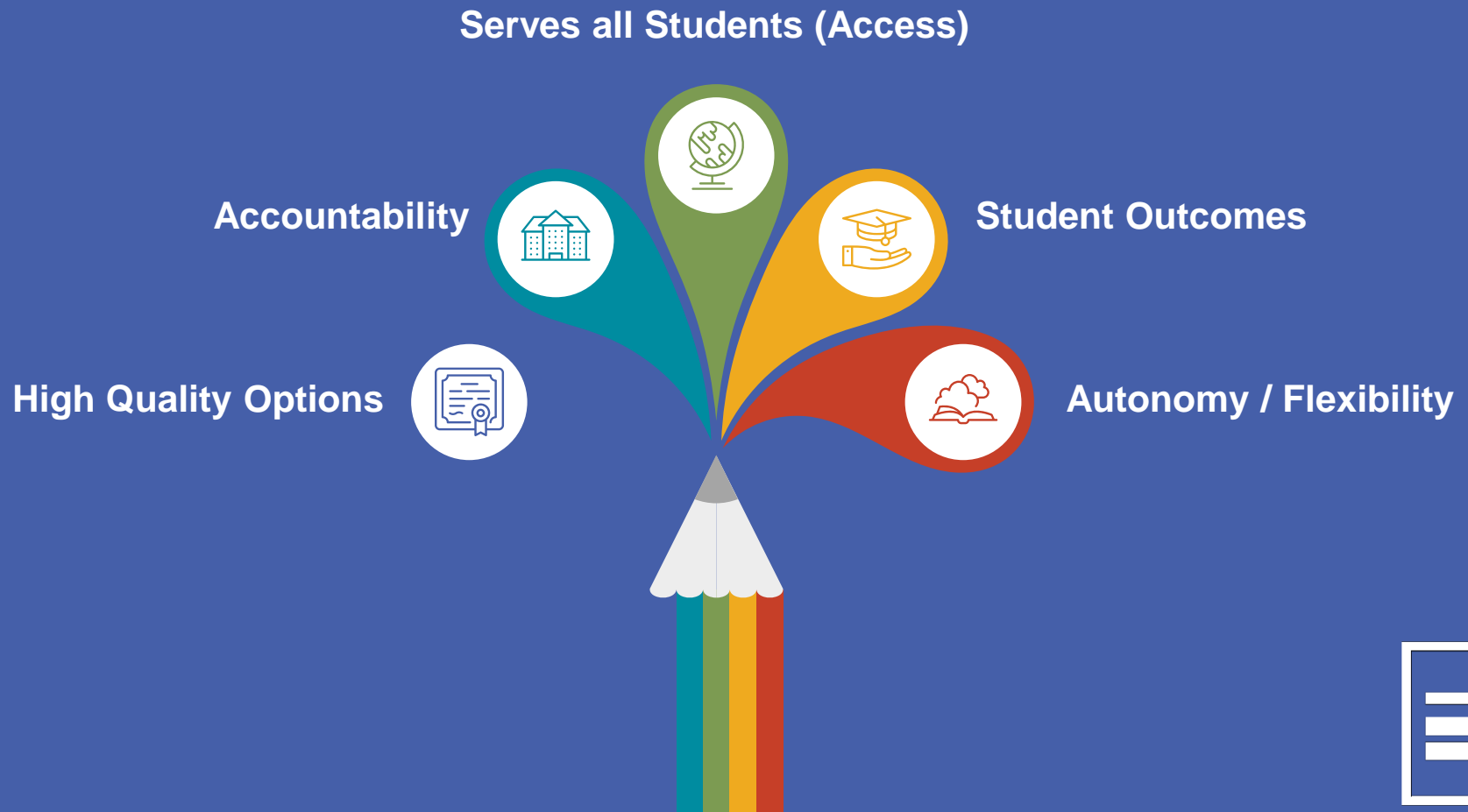
Key Messages Example

Serving All Students	<ul style="list-style-type: none">➤ CSI is committed to the creation and success of high-quality charter public schools that meet the needs of their communities, particularly those serving at-risk populations and working to close the achievement gap.<ul style="list-style-type: none">○ CSI takes an active approach to evaluating and improving upon service to all students.○ CSI has prioritized access and equity by growing its team of experts, offering expanded professional development opportunities for school staff, implementing data-driven improvement strategies, and committing financial resources at both the school and CSI level.○ CSI's portfolio of schools serves a student population that is reflective of the state average for English Learners, low-income students, and minority students.○ While lower than the state average, the percentage of students with disabilities served by CSI schools continues to grow.
-----------------------------	--

Workshop: Crafting Key Messages



Workshop: Crafting Key Messages





Our Journey





Needs Assessment



Audiences



Existing Materials

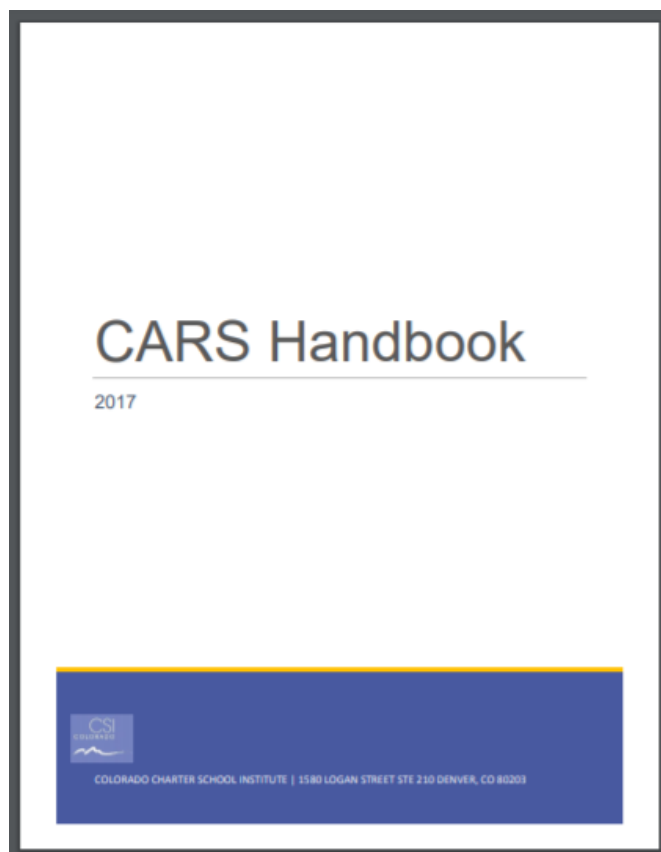


Access Points

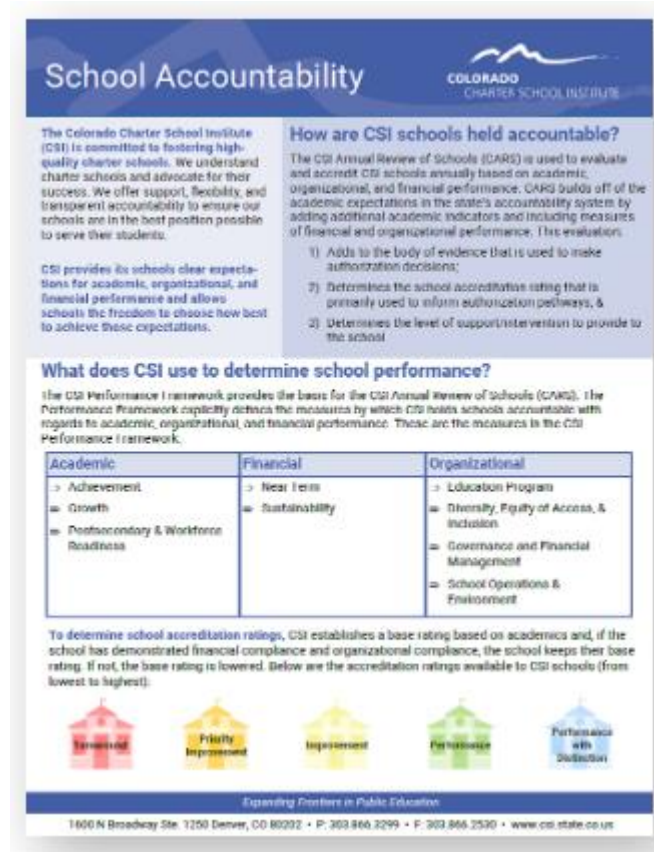




Audience/Info Alignment

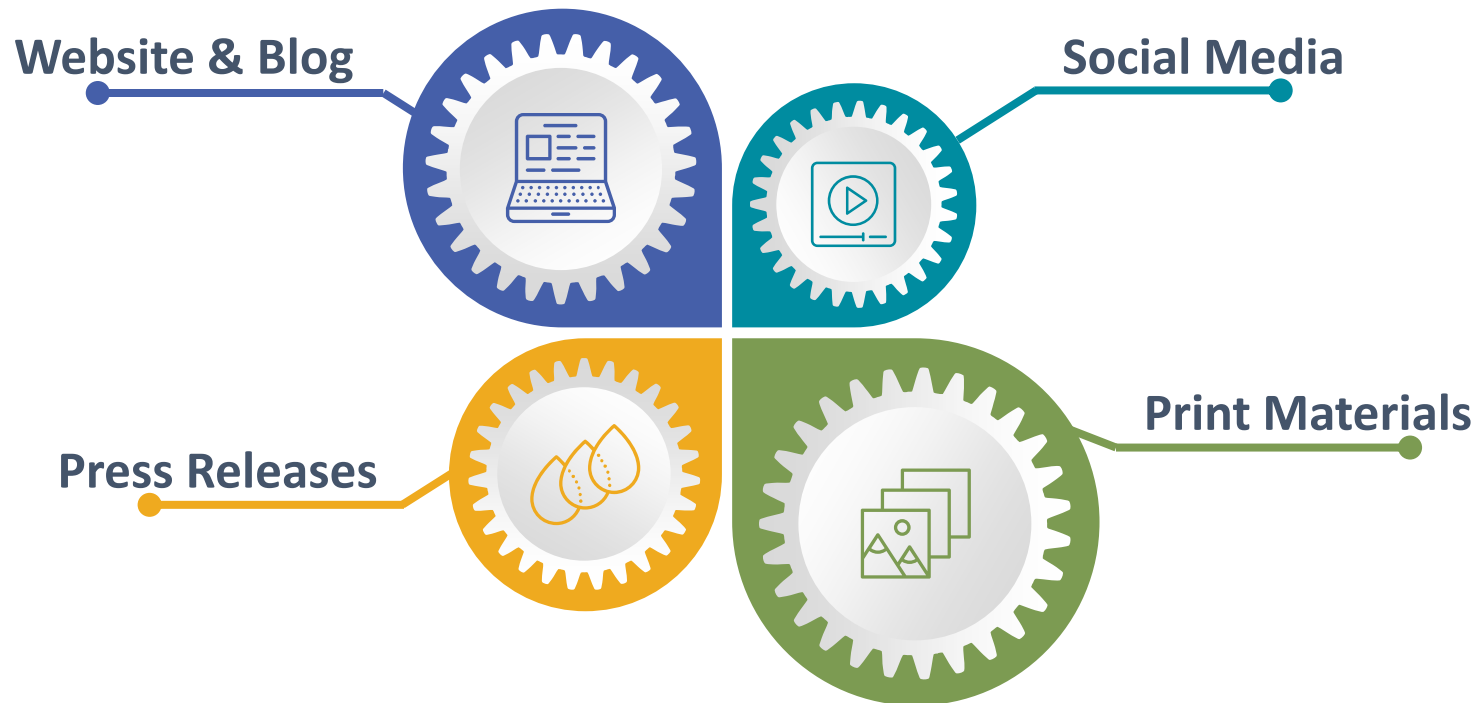


VS





Where to Share





Example: One Pagers

CSI Overview

CSI Overview

What We Believe

We believe that every child should have access to high performing public schools. And we believe that the strength and success of high quality public schools should not be held back by the challenges of poverty and the needs of our students.

Our Mission

As a nonprofit charter school authorizer, the Colorado Charter School Institute (CSI) seeks to foster high-quality public school choices with a focus on achieving the achievement gap.

Our Schools

CSI oversees 11 charter schools across five school districts in the state of Colorado. These schools are located in Denver, Aurora, and Lakewood.

Our Students

CSI oversees 11 charter schools. Our students are primarily students of color, with a focus on students who are economically disadvantaged.

Our Outcomes

CSI's schools have achieved significant success in the state of Colorado. Our schools have consistently performed well on state assessments, and our students have achieved high graduation rates.

Authorizer Profile

Authorizer Profile

What is a Charter Authorizer?

Charter authorizers are responsible to their charter authorizer for ensuring the quality and success of their schools. They are responsible for ensuring that their schools are meeting the needs of their students and for ensuring that their schools are providing a high quality education.

Colorado Charter Authorizers

CSI is a charter authorizer in the state of Colorado. We are responsible for ensuring that the schools we oversee are providing a high quality education and for ensuring that our students are achieving the achievement gap.

The CSI Portfolio of Schools

CSI oversees 11 charter schools across five school districts in the state of Colorado. These schools are located in Denver, Aurora, and Lakewood.

Exclusive Chartering Authority

CSI is the exclusive chartering authority for the schools we oversee. This means that we are the only organization that can charter schools in the state of Colorado.

High Quality Authorizing

CSI is committed to providing a high quality education for all students. We achieve this by ensuring that our schools are meeting the needs of their students and by ensuring that our schools are providing a high quality education.

Serving All Students

Serving All Students

A Focus on Access & Equity

CSI is committed to providing a high quality education for all students. We achieve this by ensuring that our schools are meeting the needs of their students and by ensuring that our schools are providing a high quality education.

Student Services Overview

CSI provides a variety of services to our students, including tutoring, counseling, and social services. These services are designed to help our students succeed in school and in life.

Types of Support

CSI provides a variety of support services to our schools, including financial support, technical support, and professional development. These services are designed to help our schools succeed and to ensure that our students are receiving a high quality education.

Early Student Outcomes

CSI is committed to providing a high quality education for all students. We achieve this by ensuring that our schools are meeting the needs of their students and by ensuring that our schools are providing a high quality education.

School Accountability

How are CSI schools held accountable?

CSI schools are held accountable for their performance on state assessments, graduation rates, and other measures of school success. CSI provides a variety of support services to our schools to help them succeed and to ensure that our students are receiving a high quality education.

What does CSI use to determine school performance?

CSI uses a variety of measures to determine school performance, including state assessments, graduation rates, and other measures of school success. CSI provides a variety of support services to our schools to help them succeed and to ensure that our students are receiving a high quality education.

Performance Framework

What is the CSI Performance Framework?

The CSI Performance Framework is a set of standards and expectations that guide the performance of CSI schools. It is designed to ensure that all schools are providing a high quality education and that all students are achieving the achievement gap.

Academic Performance Framework

The Academic Performance Framework is a set of standards and expectations that guide the performance of CSI schools. It is designed to ensure that all schools are providing a high quality education and that all students are achieving the achievement gap.

Tiered Supports

All schools within the Colorado Charter School Institute portfolio have access to academic, financial, and operational support services and interventions.

Standard Supports and Interventions

CSI provides a variety of support services and interventions to our schools, including tutoring, counseling, and social services. These services are designed to help our students succeed in school and in life.

Tiered Supports and Interventions

CSI provides a variety of support services and interventions to our schools, including tutoring, counseling, and social services. These services are designed to help our students succeed in school and in life.

Financial Performance

CARS Report Financial Performance Metrics

CSI provides a variety of support services and interventions to our schools, including tutoring, counseling, and social services. These services are designed to help our students succeed in school and in life.

Category	2019-2020	2020-2021	2021-2022	2022-2023	2023-2024
Operating Costs	100%	100%	100%	100%	100%
Capital Expenditures	100%	100%	100%	100%	100%
Debt Service	100%	100%	100%	100%	100%
Other	100%	100%	100%	100%	100%



Example: One Pagers

Serving All Students

The Charter School Institute (CSI) is committed to fostering high-quality charter school options, with a particular focus on service to and performance of underserved populations. We take an active approach to evaluating and improving upon service to all students.

Prioritizing Access & Equity

The CSI Board Resolution 1549 (2015) affirmed the commitment to closing the achievement gap, charging staff with increasing and improving services.

The CSI Special Education Report (2016) was commissioned to review the state of its special education programs and services and provide recommendations to improve.

CSI created a National Partnership (2017) with the National Center on Special Education in Charter Schools to develop a screener and tiered supports to meet the needs of schools.

CSI developed its Student Services Screener and Tiers of Support to both assess and support schools in providing equal access and quality programs to students who qualify for specialized supports.

Student Services Screener

CSI utilizes its Student Services Screener to consider issues of access and equity. The screener tool considers a school's performance across 6 indicators for students with disabilities, students with 504 plans, English Language Learners, and Gifted and Talented students.

SPED	504	ELL	GT
Enrollment			
Stability			
Growth			
Graduation (HS)			
Discipline			
Compliance			

Tiers of Support

CSI utilizes its Tiers of Support to ensure schools receive the appropriate level of support and intervention. All schools have access to universal supports, and Tier 2 and 3 schools have access to additional layers of customized support.

Early Outcomes

CSI's service to English Learners and Gifted & Talented students remains consistent and reflective of the state average. Service to students who qualify for special education and those who qualify for 504 plans continue to trend upward.

Expanding Frontiers in Public Education

1600 N Broadway Ste. 1250 Denver, CO 80202 • P: 303.866.3299 • F: 303.866.2530 • www.csi.state.co.us

Special Education

The Charter School Institute (CSI) is committed to fostering high-quality charter school options with a particular focus on service to and performance of underserved populations. CSI has established the following initiatives to provide greater supports around special education services.

Capacity-Building Initiatives

CSI Special Education Coordinators

Each CSI school is assigned a CDE-licensed special education provider or administrator that serves as the designee of the CSI Special Education Director. This Special Education Coordinator provides oversight, consultation, mediation, and professional development to each of its schools.

CSI directly employs the Special Education Coordinators rather than requiring each school to employ its own coordinator. This helps to reduce the administrative burden on schools while also providing a standard level of support across the CSI portfolio of schools.

Professional Development

CSI offers professional development and scholarship opportunities to build capacity around special education at the school level.

CSI partners with the **RELAY Graduate School of Education** to offer the Special Education Leadership Academy and a Special Education Endorsement program. In addition to regional trainings on a variety of topics offered by CSI, trainings are also offered through the **Crisis Prevention Institute (CPI)**, an international training organization specializing in the safe management of disruptive and assaultive behavior.

Financial Supports

ECEA Funds

85% of state and federal funds flow directly to schools with the remainder spent on special education coordinators and related staff development. CSI does not charge any additional special education fees to schools.

SPED Reserve

CSI schools maintain a **Special Education Reserve** within their budgets to respond to unexpected needs of students with disabilities.

Higher Needs Grants

CSI works to provide assistance through grants and loans to address unanticipated costs for higher needs of students with disabilities.

Partnerships

CSI partners with experts in the field to improve resources and outcomes for special education students.

Expanding Frontiers in Public Education

1600 N Broadway Ste. 1250 Denver, CO 80202 • P: 303.866.3299 • F: 303.866.2530 • www.csi.state.co.us



Example: Website

Who We Are

The Colorado Charter School Institute is a statewide charter school authorizer committed to creating and sustaining a portfolio of high-quality public school options that meet the needs of all students. CSI oversees 40 schools across Colorado, from Fruita to Colorado Springs, Durango to Steamboat Springs.

We believe that every child should have access to high performing school choices. We are committed to the creation and success of high-quality charter public school options that offer diverse educational models to best meet the needs of every child.

Our approach to authorizing charter schools balances autonomy and accountability. We offer our schools flexibility to choose the educational methods that best meet the unique needs of their students, and we hold them accountable to clear expectations for performance.

About CSI

We Serve All Students

CSI's service to students of color, students eligible for free or reduced price lunch, and English learners reflects that of the state.

18268

STUDENTS ATTEND 39 SCHOOLS

51%

ARE STUDENTS OF COLOR

38%

ARE ELIGIBLE FOR FREE OR REDUCED PRICED LUNCH

17%

ARE ENGLISH LANGUAGE LEARNERS

CSI's School Portfolio

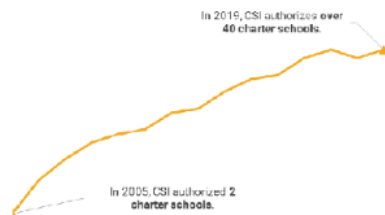


Example: Anniversary Publication

Fifteen Years Later

Fifteen years later, there are over 250 charter schools serving nearly 125,000 students Pre-Kindergarten to 12th grade across Colorado. Fourteen percent of total public school enrollment is from charter schools. CSI serves over 18,000 children in over 40 charter schools across the state, from Fruita to Colorado Springs, Durango to Steamboat Springs.

While much has changed in the charter landscape and within CSI since 2004, many of the fundamental conversations and priorities of the statewide charter entity endure.



Continued Conversations

Supports vs. Autonomy

The existential discussions of the founding board and staff about the proper role of CSI in offering schools greater support versus greater autonomy are conversations that continue today. Statute clearly defines CSI as different from a school district yet with similar oversight responsibilities. CSI has shifted along the continuum between offering its schools greater supports versus greater autonomy over the years, seeking to find a balance that preserves school autonomy while also taking advantage of benefits of economies of scale.

Autonomy vs. Accountability

Similarly, CSI continues to discuss the proper level of autonomy for schools based on performance. The CSI approach to authorizing charter schools balances autonomy and accountability as CSI offers its schools the flexibility to choose the educational models and methods that best meet the unique needs of their students and communities and holds them accountable for academic, financial, and organizational performance.

All schools are held to CSI's transparent standards of performance, and schools receive annual evaluations of their performance against these standards. CSI provides tiered supports to schools based on their individual levels of performance, thereby granting greater autonomy to higher-performing schools and providing increased interventions and supports to lower-performing schools. CSI continues to consider how the balance between autonomy and accountability may differ based on factors such as proximity to resources and school model.

Colorado Governor Jared Polis, who was a member of the State Board of Education when CSI was established, shares a reflection on how CSI balances autonomy and accountability: "[The] Charter School Institute has played a constructive role in helping bring [student achievement] about in more areas of the state and really embrace more learning options and ways to help students achieve with differentiated learning with programs...and making sure that they're accountable as well."

A Continued Focus on At-Risk Students

CSI remains committed to fostering high-quality charter school options with a particular focus on service to and performance of at-risk students. Importantly, CSI takes an active approach to evaluating and improving upon serving all students well.

In 2015, the CSI board passed Board Resolution 1549, which affirmed CSI's commitment to closing the achievement gap and charged staff with increasing and improving services for students. The following year, CSI commissioned a Special Education Report to review the state of its special education programs and services and provide recommendations for moving forward. In 2017, CSI collaborated with the National Center for Special Education in Charter Schools to develop the Student Services Screener and Tiers of Support to assess and support schools in providing equal access and quality programs to students who qualify for specialized supports.

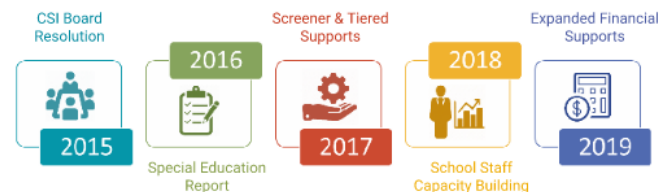
More recently, CSI has expanded its special education initiatives by working collaboratively with schools to increase financial resources and to build school leadership capacity to better support students with special needs.

CSI does not retain administrative fees from the federal Exceptional Children's Education Act (ECEA) funds, so 100% of the federal funds flow directly to schools. Additionally, special education fund reserves have been created both at CSI and at CSI schools to address unanticipated needs.

To support school special education staffing capacity, CSI hires Special Education Coordinators on behalf of its schools. CSI also offers scholarships for school staff to participate in leadership programs to support capacity building within the portfolio.

Early outcomes of these recent initiatives are promising. CSI's service to English Learners and Gifted & Talented students remains consistent and reflective of the state average. Service to students who qualify for special education and those who qualify for 504 plans continues to trend upward.

This renewed commitment to serving all students reflects the original mission and vision of CSI.





Example: Annual Report

ADVANCING EQUITY THROUGH ORGANIZATIONAL INITIATIVES

Continued Commitment to Serving All Students

CSI remains committed to fostering high-quality charter school options with a particular focus on service to and performance of at-risk students. Importantly, CSI takes an active approach to evaluating and improving upon serving all students well.

In 2015, the CSI Board passed Board Resolution 1549, which affirmed CSI's commitment to closing the achievement gap and charged staff with increasing and improving services for students.

The following year, CSI commissioned a Special Education Report to review the state of its special education programs and services and provide recommendations for moving forward.

Expanded English Language Development Training

In 2017, CSI collaborated with the National Center for Special Education in Charter Schools to develop the Student Services Screener and Tiers of Support to assess and support schools in providing equal access and quality programs to students who qualify for specialized supports. A SPED MOU was also established to articulate clear roles and responsibilities for special education school staff.

In 2018, CSI expanded its special education initiatives by partnering to offer capacity building and professional development for special education staff at CSI schools.

Moving forward, CSI is working to increase financial resources to better support students with special needs.

Expanded English Language Development Training

CSI hosted its first ever English Language Development (ELD) professional development series in 2018-19 in line with its organizational focus to advance equity. Trainings took place regionally, and attendees included English Learner Coordinators as well as general education teachers and staff from both CSI and non-CSI schools.

Training topics included aligning programs and procedures to support linguistically diverse students, lesson-planning considerations and differentiation strategies for a culturally and linguistically diverse student population, and practical ways to use student-level English language proficiency data in future year planning. Over 65 staff members from 26 CSI schools attended!

CSI Board Prioritizes Service to At-Risk Students

2015

Commissioning of Special Education Report

2016

Development of Screener & Tiered Supports

2017

Greater Capacity Building of Special Education Staff

2018


Expansion of Special Education Financial Resources

2019



Example: Blog

Terry's Blog




Terry Croy Lewis, Ph.D.
Executive Director |
Colorado Charter School
Institute

Subscribe

Search

Recent Posts

- [Takeaways from the First Ever Equity Convening](#)
- [The Challenges of Rural Chartering](#)
- [Diving into Access and Equity in Special Education](#)
- [Celebrating CSI's 15th Anniversary](#)
- [School Safety](#)



Diving into Access and Equity in Special Education

Aug 27, 2019 | Advocacy, Authorizing, Curriculum & Instruction, Educators, Terry's Blog

The Colorado Charter School Institute (CSI) is committed to the creation and success of high-quality charter public schools that meet the needs of their communities, particularly those serving at-risk populations and working to close the achievement gap. CSI...

[read more](#)



Example: Presentations





Workshop: Develop Informational Materials

Material	Audience	Status (existing, to be created)
Annual Report	public	Existing
Authorizer Profile	public	To be created
Partnership Authorization	District authorizers	To be created





Our Journey





Public leadership requires the use of both the “head” and the “heart” to mobilize others to act effectively on behalf of shared values.



Recording Stories

14

ADVANCING EQUITY THROUGH ADVOCACY

Setting the Context

In 2017, the General Assembly passed House Bill 17-1375 to promote equity in educating public school students, and it specifically outlined the way in which districts could distribute local Mill Levy Override (MLO) funds among their schools. The law requires school districts to either distribute at least 95% of their per pupil MLO revenue to all of their schools (including charter schools) or to establish a plan that describes how the MLO dollars will be equitably distributed to all district schools.

Recognizing that CSI schools do not have access to revenue generated by local Mill Levy Overrides, HB17-1375 created the CSI Mill Levy Equalization (MLE) Fund and allowed the legislature to allocate funding on an annual basis. Funding would ensure parity between students attending CSI schools and students attending district-run schools.

During the 2018 legislative session, the General Assembly allocated \$5.5 million to the CSI MLE Fund to be distributed in the 2018-2019 school year to CSI schools.

Protecting Our Access

The 2019 legislative session kicked off with a bill (HB19-1190) seeking to strip CSI schools of the Mill Levy Equalization Fund. Students, teachers, parents, school leaders, our fellow district-run charter schools, and education partners stepped up to ensure our voices were heard loud and clear: all public school students, including those attending CSI schools, deserve access to public resources.

One of those powerful voices was that of Sabrina, a New Legacy Charter School student. With her two-year old, Avyan, on her lap, Sabrina shared powerful testimony of her personal journey, from dropping out of school and becoming pregnant to the support and education that she and her son received at New Legacy Charter School. Thanks to the testimony and advocacy of Sabrina and many others, CSI's access to funding equity was protected with a 12-1 defeat of HB19-1190.



New Legacy Charter School student, Sabrina, and her son testifying at the Capitol

15

Advancing Funding Equity

The mechanism allowing CSI schools to access mill levy equalization dollars was maintained, which was a significant victory for students attending CSI schools.

As legislative session continued, the General Assembly ultimately appropriated \$7 million to the CSI Mill Levy Equalization Fund to be distributed in the 2019-2020 school year to CSI schools. In doing so, CSI schools would receive \$317 per student in additional funds.

Students attending CSI schools still see over \$1,200 less than their district peers. While there is still a long way to go to achieve funding equity through the CSI Mill Levy Equalization Fund, the outcomes from the 2019 legislative session marked another small step forward.

Per Pupil Mill Levy Override/Equalization Dollars

Traditional School

\$1,524



District-Authorized
Charter School

\$1,524



CSI-Authorized
Charter School

\$317



CSI believes that every public school student deserves equal access to public resources. During the 2019 legislative session, another small step towards funding equity for CSI schools was achieved.



Recording Stories

Denverite

News

Things to Do

Culture

Homes & Cranes

In a bipartisan vote, Colorado lawmakers preserve funding for state charter schools



Sabrina Suarez brought her son to advocate for her charter school, which serves young par... their children. (Sandra Fish/Cha

Chalkbeat

Mar. 06, 2019, 1:

Storytelling through pictures: Dr. Woods goes to Denver

By Sean Cayton



click to enlarge

SLIDESHOW



DR. TERESA
WOODS GOES TO
DENVER

By Sean Cayton

[Click to View 16 slides](#)

© Sean C

I'm a huge believer in photojournalism. Today, unfortunately, it hardly exists — unless it's a national or international news story — almost nothing gets documented, and I think local communities suffer greatly for it.

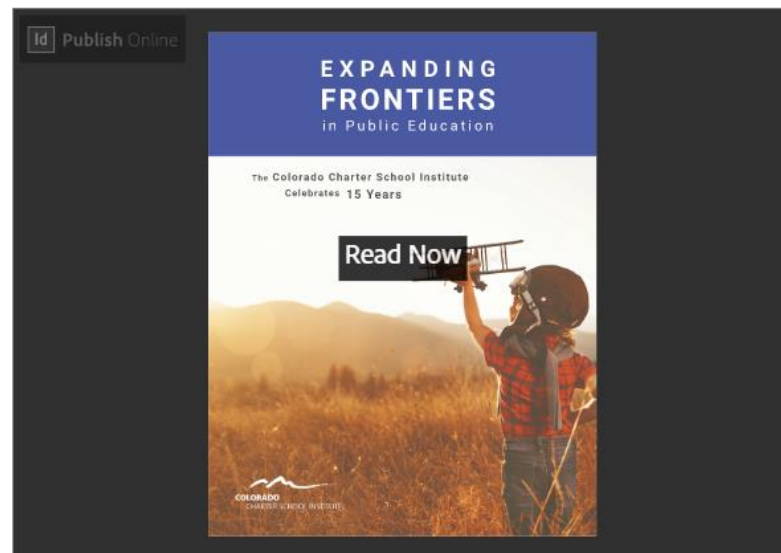
I still believe that photojournalism is a profound way of truth-telling and a wonderful way to tell a story. Every once in a while, I still find an opportunity to practice telling stories.



Recording Stories

CSI Celebrates 15 Years

Watch the CSI 15th Anniversary video, recording the history of CSI through interviews, or read the publication *Expanding Frontiers in Public Education* to learn more about CSI's creation, early years, and continued focuses.





Workshop: Incorporating Stories

Key Message	Story
We serve all students	Parent with students attending different schools





Measuring Impact





THANK YOU!

- Janet Dinnen

janetdinnen@csi.state.co.us

- Terry Croy Lewis

terrycroylewis@csi.state.co.us